



## Technical specifications and instructions



**25 Frame**

**Piston pump**

**Standard brass model**

**2520**

**Pulse pump manifold model**

**2525**

**Hi-Temp Model 2520C**

### Specifications (\*)

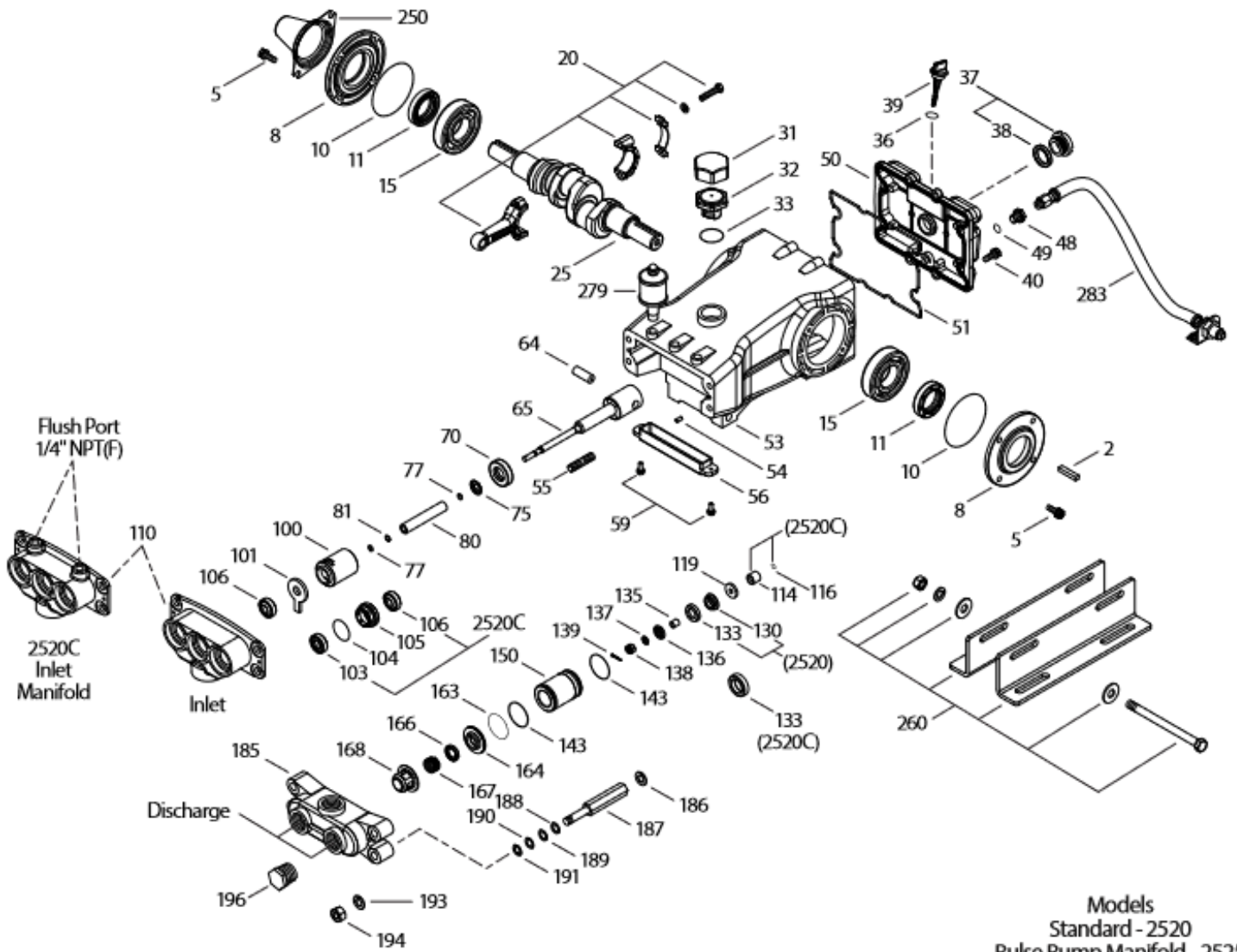
	<b>Model 2520,2525</b>	<b>Model 2520C</b>
<b>Flow</b>	95 L/min	95 L/min
<b>Pressure range</b>	7 to 55 bar	7 to 55 bar
<b>RPM</b>	772 RPM	772 RPM
<b>Bore</b>	38 mm	38 mm
<b>Max. liquid temp.</b>	71° C	98° C
<b>Inlet press. range</b>	-0,6 to 2,8 bar	-0,6 to 2,8 bar
<b>Dimensions</b>	557 x 382 x 198 mm	544 x 382 x 198 mm

### Common specifications

<b>Stroke</b>	36 mm
<b>Crankcase capacity</b>	2,5 L
<b>Inlet ports (1)</b>	1-1/4" NPTF
<b>Flushing ports (2)</b>	1/4" NPTF
<b>Discharge ports (3)</b>	1" NPTF
<b>Shaft diameter</b>	30 mm
<b>Weight</b>	31,5 kg

(\*) Abnormalities permitted only after consultation and written confirmation from Cat Pumps.

# Exploded View



# Parts list

It.	Num. 2520 2525	Mat.	Num. 2520C	Mat.	Description	Qty
2	990036	STL	990036	STL	Key (M8x7x40){3/00}	1
5	126544	STCP R	126544	STCP R	Screw, HHC sems (M8x25)	8
8	49533	ALE	49533	ALE	Cover, bearing (see TB 118)	2
10	27772	NBR	27772	NBR	O-ring, bearing cover – 70D	2
11	27771	NBR	27771	NBR	Seal, oil, crankshaft – 70D	2
15	26512	STL R	26512	STL R	Bearing, ball	2
20	48613	TNM	48613	TNM	Rod, connecting	3
21	126562	STCP R	126562	STCP R	Washer, locking	3
25	49795	FCM	49795	FCM	Crankshaft dual-end (M38.5)	1
31	828710	-	828710	-	Protector, oil cap w/foam gasket	1
32	43211	ABS	43211	ABS	Cap, oil filler	1
33	14177	NBR	14177	NBR	O-ring, oil filler cap – 70D	1
36	129343	RBR	129343	RBR	Gasket, flat	1
37	92241	-	92241	-	Gauge, oil bubble w/gasket – 80D	1
38	44428	NBR	44428	NBR	Gasket, flat, oil gauge – 80D	1
39	27769	ABS	27769	ABS	Dipstick	1
40	126544	STCP R	126544	STCP R	Screw, HHC sems (M8x25)	8
48	25625	STCP	25625	STCP	Plug, drain (1/4" x 19 BSP)	1
49	23170	NBR	23170	NBR	O-ring, drain plug – 70D	1
50	49531	ALE	49531	ALE	Cover, rear (see TB 118 & 126)	1
51	27767	NBR	27767	NBR	O-ring, rear cover – 70D	1
53	49528	ALE	49528	ALE	Crankcase w/guide pins (see TB 118)	1
54	27488	S	27488	S	Pin, guide	2
55	126547	STCP R	126547	STCP R	Stud (M12x53)	4
56	27790	POP	27790	POP	Pan, oil	1
59	125824	STCP R	125824	STCP R	Screw, HHC, sems (M6x16)	2
64	27784	CM	27784	CM	Pin, crosshead	3
65	<b>29229</b>	<b>SZZ</b>	<b>43266</b>	<b>SZZ</b>	Rod, piston (M8)	3
70	27785	NBR	27785	NBR	Seal, oil, crankcase – 70D	3
75	27786	S	27786	S	Slinger, barrier	3
77	<b>26531</b>	<b>NBR</b>	<b>14198</b>	<b>FPM</b>	O-ring, sleeve	6
	<b>14198</b>	<b>FPM</b>	-	-	O-ring, sleeve	6
80	43122	SCP	43122	SCP	Sleeve (M16)	3
	43123	S	43123	S	Sleeve (M16)(unchromed)	3
81	29246	PTFE	29246	PTFE	Back-up-ring, sleeve	3
100	27788	PVDF	27788	PVDF	Retainer, seal	3
101	43126	-	43126	-	Wick, long tab (M16)	3
103	-	-	<b>43269</b>	<b>FPM</b>	Seal w/Lip	3
104	-	-	<b>14178</b>	<b>NBR</b>	O-ring, seal adapter	3
105	-	-	<b>46268</b>	<b>S</b>	Adapter, LPS	3
106	<b>43124</b>	<b>NBR</b>	<b>43272</b>	<b>FPM</b>	Seal (M16) seal w/grease pocket	3
	<b>43125</b>	<b>FPM</b>	-	-	Seal (M16)	3
110	<b>27791</b>	<b>BBCP</b>	<b>43270</b>	<b>BBCP</b>	Manifold, inlet	1
	<b>28595</b>	<b>SS</b>	-	-	Manifold, inlet	1
114	-	-	<b>46148</b>	<b>S</b>	Spacer, inlet valve	3
116	-	-	<b>14198</b>	<b>FPM</b>	O-ring, spacer	3
119	<b>29240</b>	<b>S</b>	<b>29240</b>	<b>S</b>	Valve, inlet (M8)	3
130	<b>27840</b>	<b>S</b>	-	-	Piston	3
133	<b>28409</b>	<b>FPM</b>	-	-	Cup, piston	3
	76498	ST4	76498	ST4	Cup-piston, assy (70 bar max.)	3
	<b>29094</b>	<b>ST4</b>	-	-	Cup, V-Hot	3
135	29231	S	29231	S	Spacer, piston (M8)	3
136	29239	S	29239	S	Retainer, piston (M8)	3
137	27871	S	27871	S	Washer, conical (M8)	3
138	27510	S	27510	S	Nut, slotted (M8)	3
139	29589	S	29589	S	Cotterpin (M2x18)	3
143	<b>25495</b>	<b>NBR</b>	<b>11748</b>	<b>FPM</b>	O-ring, cylinder – 70D	6
	<b>11748</b>	<b>FPM</b>	-	-	O-ring, cylinder – 70D	6

150	27844	SCP	27844	SCP	Cylinder (M65)	3
	29049	S	29049	S	<i>Cylinder (M65) (unchromed)</i>	3
163	<b>28395</b>	<b>NBR</b>	<b>28769</b>	<b>FPM</b>	O-ring, valve seat	3
	<b>28769</b>	<b>FPM</b>	-	-	<i>O-ring, valve seat</i>	3
164	28396	S	28396	S	Seat	3
166	43133	S	43133	S	Valve	3
167	26548	S	26548	S	Spring	3
168	43134	S	43134	S	Retainer, spring	3
185	27805	BBCP	27805	BBCP	Manifold, discharge	1
	<b>6425</b>	<b>BB</b>	-	-	<i>Manifold, pulse pump, ported</i>	1
186	126570	STCP R	126570	STCP R	Lockwasher (1/2")	4
187	<b>27803</b>	<b>STCP</b>	<b>43277</b>	<b>STCP</b>	Bolt, cylinder	4
188	126586	STCP R	126586	STCP R	Shim, washer (M12.5x0.3)	4/8
189	126580	STCP R	126580	STCP R	Shim, washer (M12x0.5)	4/8
190	126581	STCP R	126581	STCP R	Shim, washer (M12.5x1.0)	4/8
191	27933	STZP	27933	STZP	Lockwasher (M12)	4
193	126570	STCP R	126570	STCP R	Lockwasher (1/2")	4
194	126523	STCP R	126523	STCP R	Nut, hex (M12)	4
196	27807	BBCP	27807	BBCP	Plug (1" NPTM)	1
250	26516	STCP	26516	STCP	Protector, shaft	1
260	30614	STZP	30614	STZP	Mount, rail, assy	1
279	30278	STZP	30278	STZP	Oiler	3
283	34334	-	34334	-	<i>Kit, oil drain (3/8"x24") (see individual datasheet)</i>	1
295	<b>6300</b>	<b>BBSS</b>	-	-	<i>Pump, pulse (see individual datasheet)</i>	1
	<b>6305</b>	<b>BBSS</b>	-	-	<i>Pump, pulse (see individual datasheet)</i>	1
300	<b>30256</b>	<b>FPM*</b>	-	-	<i>Kit, cup (incl. 133,139,143,355)</i>	1
302	<b>30252</b>	<b>NBR</b>	-	-	<i>Kit, piston (119-143,355)</i>	1
305	<b>30819</b>	<b>NBR</b>	-	-	<i>Kit, sleeve and seal (75,77,80,101,106,139)</i>	1
306	<b>30482</b>	<b>NBR</b>	-	-	<i>Kit, seal (incl. 101,106,139)</i>	1
310	30767	NBR	30767	NBR	<i>Kit, valve (incl. 143,163,164,166,167,168)</i>	1
355	<b>27853</b>	<b>NY</b>	-	-	<i>Insertor, cup</i>	1

**Bold print part numbers are unique to a particular pump model. Italics are optional items. { }** Date of latest production change.

R components comply with RoHS Directive.

See 'Tech Bulletins' 008 ,009, 017, 021, 024, 034, 036, 063, 064, 074, 083, 085, 118 and 126 for additional information.

Material codes: (not part or part number)

ABS	ABS plastic	NBR	Medium nitrile (Buna-N)	SS	316SS
ALE	Aluminum Epoxy	NY	Nylon	ST4	Special PTFE 4
BB	Brass	POP	Polypropylene	STCP	Steel / chrome plated
BBCP	Brass/chrome plated	PTFE	Pure polytetrafluorethylene	STL	Steel
BBSS	Brass / 316SS	PVDF	Polyvinylidene fluoride	STZP	Steel / zinc plated
CM	Chrome-moly	S	304SS	SZZ	304 SS / zamak
FCM	Forged chrome-moly	SCP	304SS / chrome plated	TNM	Special high strength
FPM	Fluorocarbon	SNG	Special blend Buna		