



## Technical specifications and instructions



### **15 Frame Plunger pump**

**Standard brass 1530**

**Brass flushed 1530C**

**Stainless steel 1531**

### Specifications (\*)

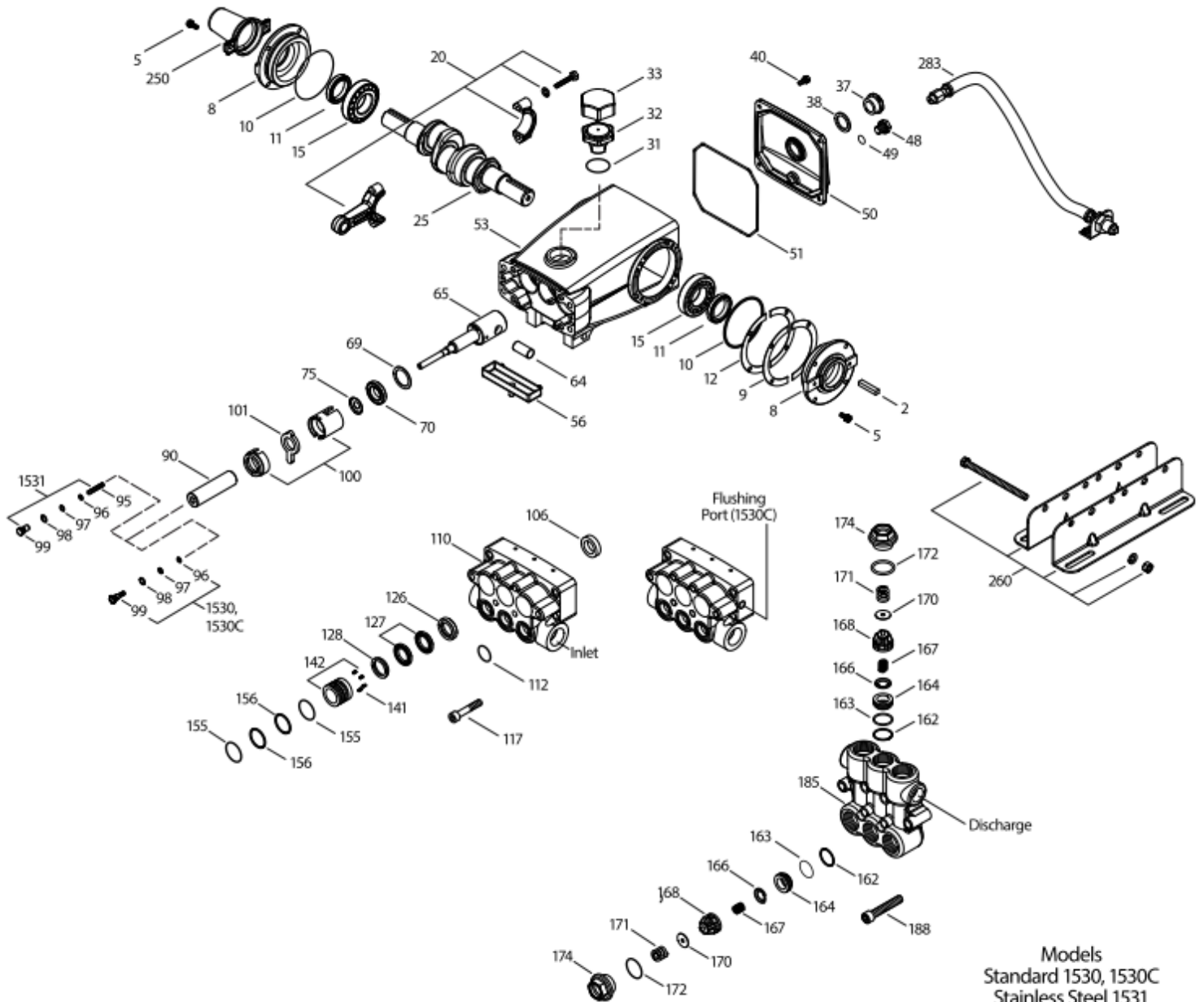
	<b>Model 1530</b>	<b>Model 1531</b>
<b>Flow</b>	59 L/min	59 L/min
<b>Pressure range</b>	6,9 to 103 bar	6,9 to 103 bar
<b>RPM</b>	1450 RPM	1450 RPM
<b>Inlet pressure range</b>	Flooded to 4,9 bar	Flooded to 4,9 bar
<b>Stroke</b>	30 mm	30 mm

### Common specifications

<b>Bore</b>	25 mm
<b>Crankcase capacity</b>	1,26 L
<b>Maximum liquid temperature</b>	60° C
<b>Inlet ports (2)</b>	1" NPTF
<b>Discharge ports (2)</b>	3/4" NPTF
<b>Flushed ports (2)</b>	1/4" NPTF
<b>Shaft diameter</b>	30 mm
<b>Weight (1530)</b>	25 kg
<b>Weight (1531)</b>	24 kg
<b>Dimensions</b>	438 x 330 x 188 mm

(\*) Abnormalities permitted only after consultation and written confirmation from Cat Pumps.

# Exploded View



Models  
Standard 1530, 1530C  
Stainless Steel 1531  
December 2016

# Parts list

Item	Num. 1530	Mat.	Num. 1531	Mat.	Description	Qty
	<b>1530C</b>					
2	990036	STL	990036	STL	Key (M8x7x40)	1
	30067	STL	30067	STL	Key (M8x7,5x25)	1
5	<b>125824</b>	<b>STCP R</b>	<b>92538</b>	<b>S</b>	Screw, sems HHC (M6x16)	8
8	43496	AL	43496	AL	Cover, bearing (se TB 118)	2
10	11340	NBR	11340	NBR	O-ring, bearing cover – 70D	2
11	43495	NBR	43495	NBR	Seal, oil, crankshaft – 70D	2
12	815281	FBR	815281	FBR	Shim, split, 2 pc	0/6
13	814800	S	814800	S	Shim, split, 2 pc	0/4
15	39060	STL	39060	STL	Bearing, roller	2
20	48600	TNM	48600	TNM	Rod, Connecting assembly	3
25	43494	FCM	43494	FCM	Crankshaft, dual end	1
31	828710	PE	828710	PE	Protector, oil cap w/foam gasket	1
32	43211	ABS	43211	ABS	Cap, oil filler	1
33	14177	NBR	14177	NBR	O-ring, filler cap – 70D	1
37	92241	-	92241	-	Gauge, oil, bubble w/gasket – 80D	1
38	44428	NBR	44428	NBR	Gasket, flat, oil gauge – 80D	1
40	<b>126541</b>	<b>STCP R</b>	<b>92542</b>	<b>S</b>	Screw, sems HHC (M6x20)	4
48	25625	STCP	25625	STCP	Plug, drain (1/4" x 19 BSP)	1
49	23170	NBR	23170	NBR	O-ring, drain plug – 70D	1
50	43491	AL	43491	AL	Cover, rear (see TB 118)	1
51	44834	NBR	44834	NBR	O-ring, rear cover – 70D	1
53	115471	AL	115471	AL	Crankcase with guide pins	1
56	44664	POP	44664	POP	Pan, oil	1
64	43507	CM	43507	CM	Pin, crosshead	3
65	<b>48228</b>	<b>SHS</b>	<b>48360</b>	<b>SSHS</b>	Rod, plunger	3
69	126592	STCP R	126592	STCP R	Washer, oil seal	3
70	43500	NBR	43500	NBR	Seal, oil, crankcase – 80D	3
75	43506	S	43506	S	Slinger, barrier	3
90	48606	CC	48606	CC	Plunger, ceramic (M25x92)	3
95	-	-	<b>89651</b>	<b>SS</b>	Stud, plunger retainer (M6x70)	1
96	43235	PTFE	43235	PTFE	Back-up-ring, plunger retainer	3
97	17399	NBR	17399	NBR	O-ring, plunger retainer – 80D	3
	14160	FPM	14160	FPM	O-ring, plunger retainer – 80D	3
	# 46204	EPDM	# 46204	EPDM	O-ring, plunger retainer – 70D	3
98	<b>45891</b>	<b>CU</b>	<b>44041</b>	<b>SS</b>	Gasket, plunger retainer	3
99	<b>104360</b>	<b>S</b>	<b>44031</b>	<b>SS</b>	Retainer, plunger	3
100	899509	POP	899509	POP	Retainer, seal, 2 pc {07/06}	3
101	48716	-	48716	-	Wick, long tab	3
106	44086	NBR	44086	NBR	Seal, LPS w/SS-Spg	3
	45846	FPM	45846	FPM	Seal, LPS w/SS-Spg	3
	# 49196	EPDM	# 49196	EPDM	Seal, LPS w/SS-Spg	3
110	<b>48608</b>	<b>FBB</b>	<b>48683</b>	<b>SS</b>	Manifold, inlet	1
	<b>48608C</b>	<b>FBB</b>	-	-	Manifold, inlet, flushed (1/4" NPTF port)	1
112	14200	NBR	14200	NBR	O-ring, inlet manifold – 70 D	3
	11719	FPM	11719	FPM	O-ring, inlet manifold	3
	# 48907	EPDM	# 48907	EPDM	O-ring, inlet manifold	3
117	<b>126515</b>	<b>STCP R</b>	<b>87952</b>	<b>S</b>	Screw, HSH (M10x55)	4
126	<b>48538</b>	<b>BB</b>	<b>48669</b>	<b>D</b>	Adapter, female	3
	-	-	<b>76667</b>	<b>SS</b>	Adapter, female	3
127	44610	STG	44610	STG	V-packing	6
128	<b>48539</b>	<b>BB</b>	<b>113025</b>	<b>SS</b>	Adapter, male	3

141	48672	SS	48672	SS	Spring, coil {12/02}	18
142	<b>48550</b>	<b>BB</b>	<b>48670</b>	<b>SS</b>	Spacer with coil springs	3
155	17629	NBR	17629	NBR	O-ring, spacer – 80D	6
	14183	<i>FPM</i>	14183	<i>FPM</i>	<i>O-ring, spacer</i>	6
	# 701491	<i>EPDM</i>	# 701491	<i>EPDM</i>	<i>O-ring, spacer – 70D</i>	6
156	28243	PTFE	28243	PTFE	Back-up ring, spacer	6
162	48363	D	48363	D	Back-up-ring, seat	6
163	26142	NBR	26142	NBR	O-ring, seat – 80D	6
	14330	<i>FPM</i>	14330	<i>FPM</i>	<i>O-ring, seat</i>	6
	# 701493	<i>EPDM</i>	# 701493	<i>EPDM</i>	<i>O-ring, seat</i>	6
164	<b>48596</b>	<b>S</b>	<b>48688</b>	<b>SS</b>	Seat, Q.V. stepped	6
166	48686	SS	48686	SS	Valve, Q.V.	6
167	48687	SS	48687	SS	Spring, valve {12/02}	6
168	44735	PVDF	44735	PVDF	Retainer, spring	6
170	44794	SS	44794	SS	Washer, spring retainer	6
171	48689	SS	48689	SS	Spring, coil {12/02}	6
172	17629	NBR	17629	NBR	O-ring, valve plug – 80D	6
	14183	<i>FPM</i>	14183	<i>FPM</i>	<i>O-ring, valve plug</i>	6
	# 701491	<i>EPDM</i>	# 701491	<i>EPDM</i>	<i>O-ring, valve plug – 70D</i>	6
174	<b>48597</b>	<b>FBB</b>	<b>49294</b>	<b>SS</b>	Plug, valve	6
185	<b>48610</b>	<b>FBB</b>	<b>48685</b>	<b>SS</b>	Manifold, discharge	1
188	<b>126519</b>	<b>STCP R</b>	<b>89981</b>	<b>SS</b>	Screw, HSH (M12x70)	6
250	30764	<i>NY</i>	30764	<i>NY</i>	<i>Protector, shaft w/2 screws</i>	1
260	30613	<i>STZP</i>	30613	<i>STZP</i>	<i>Rail, angle assy</i>	1
269	30206	<i>F</i>	30206	<i>F</i>	<i>Pulley 10" – 2 groove 'H' (see TB 003) (not shown)</i>	1
270	30059	<i>STL</i>	30059	<i>STL</i>	<i>Hub "H" (M30) (keyway M8) (see TB 003) (not shown)</i>	1
	990012	<i>STL</i>	990012	<i>STL</i>	<i>Hub "B" (M30) (keyway M8) (see TB 003) (not shown)</i>	1
283	34334	-	34334	-	<i>Kit, oil drain</i>	1
299	<b>816762</b>	<b>FBB</b>	<b>816783</b>	<b>SS</b>	<i>Head, complete (w/NBR seals &amp; O-rings)(1530 &amp; 1531 only)</i>	1
300	31355	<i>NBR</i>	31355	<i>NBR</i>	<i>Kit, seal (incl. 97,106,112,127,155,156) <b>standard</b></i>	1
	31455	<i>FPM*</i>	31455	<i>FPM*</i>	<i>Kit, seal (incl. 97,106,112,127,155,156)</i>	1
	# 31753	<i>EPDM</i>	# 31753	<i>EPDM</i>	<i>Kit, seal (incl. 97,106,112,127,155,156)</i>	1
310	<b>31360</b>	<b>NBR</b>	<b>31271</b>	<b>NBR</b>	<i>Kit, valve (incl.162,163,164,166,167,168,170,172) <b>stand</b></i>	2
	<b>31460</b>	<b>FPM</b>	<b>31281</b>	<b>FPM</b>	<i>Kit, valve (incl.162,163,164,166,167,168,170,172)</i>	2
	# 31773	<i>EPDM</i>	# 31773	<i>EPDM</i>	<i>Kit, valve (incl.162,163,164,166,167,168,170,172)</i>	2

**Bold print part numbers are unique to a particular pump model. Italics are optional items.**

{ } Date of latest production change. # silicone oil/grease required. R components comply with RoHS directive.

\* Review material codes for individual items (STG generally may be used as alternate)

See 'Tech Bulletins' 002, 003, 024, 035, 036, 043, 053, 074, 083, 085, 095, 098 and 118 for additional information.

C.AT. highly recommended for pressurized inlet, R.O. and industrial applications.

Material codes: (not part or part number)

ABS	ABS plastic	FBR	Fiber	SHS	304 ss / high strength
AL	Aluminium	FCM	Forged chrome-moly	SS	316SS
BB	Brass	FPM	Fluorocarbon	SSHS	316 SS / high strength
CC	Ceramic	NBR	Medium nitrile (Buna-N)	STCP	Steel / chrome plated
CM	Chrome-moly	NY	Nylon	STG	Special blend PTFE white
CU	Copper	PE	Polyethylene	STL	Steel
D	Acetal	POP	Polypropylene	STZP	Steel / zinc plated
EPDM	Ethylene propylene diene mon.	PTFE	Pure polytetrafluorethylene	TNM	Special high strength
F	Cast iron	PVDF	Polyvinylidene fluoride		
FBB	Forged brass	S	304SS		