



Technical specifications and instructions



15 Frame Plunger pump

Standard brass model

1560

Specifications (*)

Flow	30 L/min
Pressure range	7 to 275 bar
RPM	1140 RPM
Inlet pressure range	Flooded to 4,9 bar
Stroke	30 mm

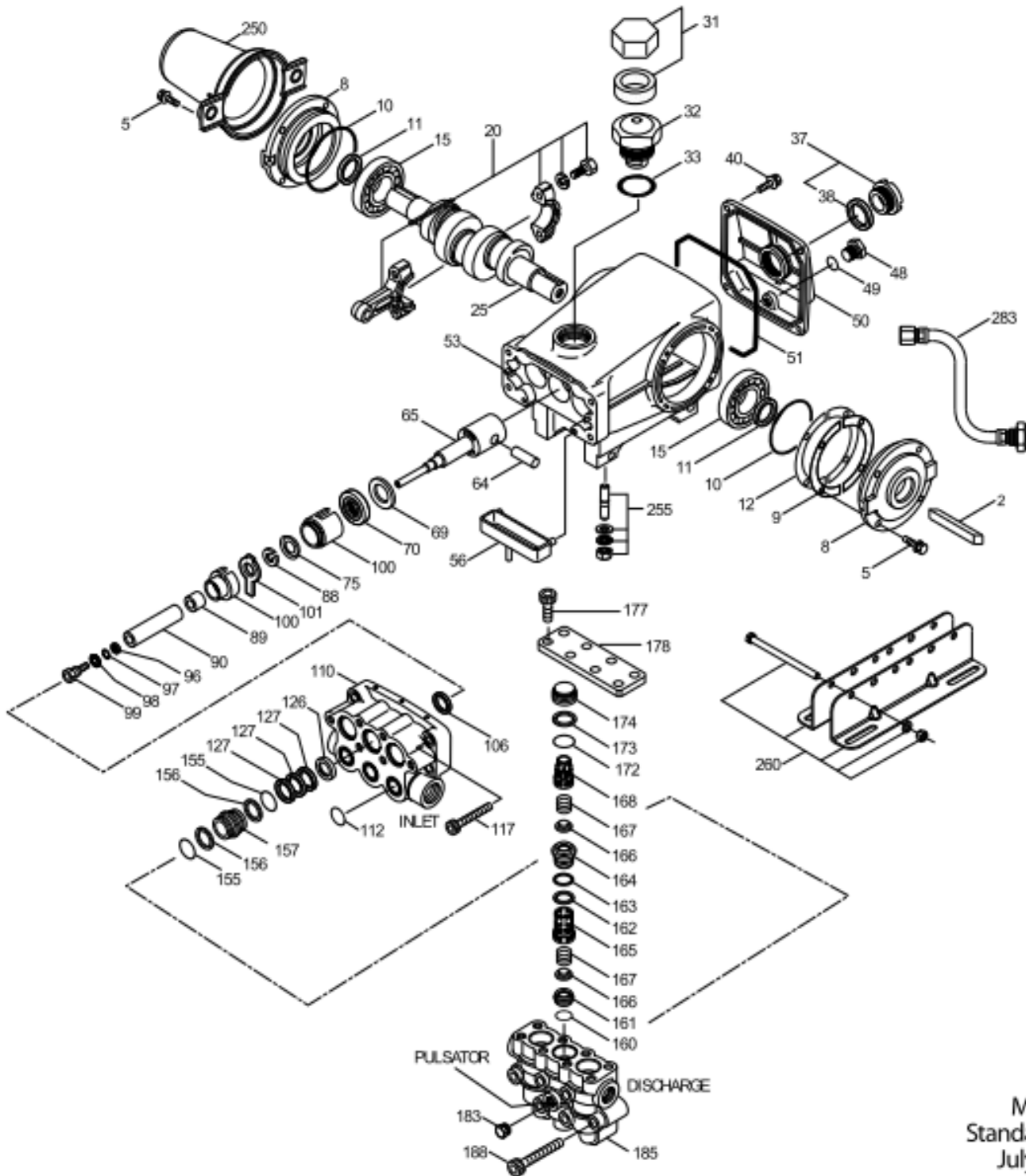
Model 1560

Common specifications

Bore	20 mm
Crankcase capacity	1,26 L
Maximum liquid temperature	60° C
Inlet ports (2)	3/4" NPTF
Discharge ports (2)	1/2" NPTF
Pulsator port (1)	1/8" NPTF
Shaft diameter	30 mm
Weight	27,2 kg
Dimensions	430 x 330 x 163,5 mm

(*) Abnormalities permitted only after consultation and written confirmation from Cat Pumps.

Exploded View



Model
Standard - 1560
July 2017

Parts list

Item	Num. 1560	Mat.	Description	Qty
2	990036	STL	Key (M8x7x40) use w/30059 and 990012	1
	30067	STL	Key (M8x7,5x25) use w/30059 'H' Hub	1
5	125824	STCP R	Screw, sems HHC (M6x16)	8
8	43496	AL	Cover, bearing (see TB 118)	2
9	815281	FBR	Shim, split, 2 pc	6
10	11340	NBR	O-ring, bearing cover – 70D	2
11	43495	NBR	Seal, oil, crankshaft	2
12	814800	S	Shim, split, 2 pc	2
15	39060	STL	Bearing, roller	2
20	126805	BZ	Rod, Connecting assembly	3
25	43494	FCM	Crankshaft, dual end (M30)	1
31	828710	PE	Protector, oil cap w/foam gasket	1
32	43211	ABS	Cap, oil filler	1
33	14177	NBR	O-ring, filler cap – 70D	1
37	92241	-	Gauge, oil, bubble w/gasket – 80D	1
38	44428	NBR	Gasket, flat, oil gauge – 80D	1
40	126541	STCP R	Screw, sems HHC (M6x20)	4
48	25625	STCP	Plug, drain (1/4" x 19 BSP)	1
49	23170	NBR	O-ring, drain plug – 70D	1
50	49276	ALE	Cover, rear (see TB 118)	1
51	44834	NBR	O-ring, rear cover – 70D	1
53	115471	AL	Crankcase with guide pins (see TB 118)	1
56	44664	POP	Pan, oil	1
64	43507	CM	Pin, crosshead	3
65	49223	SBZ	Rod, plunger	3
69	126592	STCP R	Washer, oil seal	3
70	43500	NBR	Seal, oil, crankcase	3
75	43506	S	Slinger, barrier	3
88	45675	S	Washer, keyhole	3
89	43505	BB	Spacer	3
90	43300	CC	Plunger, ceramic (M20x77)	3
96	43235	PTFE	Back-up-ring, plunger retainer	3
97	17399	NBR	O-ring, plunger retainer – 80D	3
	14160	FPM	O-ring, plunger retainer – 80D	3
98	45891	CU	Gasket, plunger retainer	3
99	104360	S	Retainer w/stud, plunger	3
100	855001	POP	Retainer, seal, 2 pc	3
101	43508	-	Wick	3
106	+ 44071	NBR	Seal, LPS w/SS-Spg	3
	44381	FPM	Seal, LPS w/S-Spg	3
	76071	ST 2	Seal, LPS w/SS-Spg	3
110	49229	FBB	Manifold, inlet	1
112	14179	NBR	O-ring, inlet manifold – 70D	3
	15855	FPM	O-ring, inlet manifold – 70D	3
117	126515	STCP R	Screw, HSH (M10x55)	4
126	49231	BB	Adapter, female	3
127	+ 44607	STG	V-packing	9
155	14176	NBR	O-ring, spacer, V/P – 70D	6
	77319	FPM	O-ring, spacer, V/P – 70D	6
156	49232	PTFE	Back-up-ring, spacer V/P	6
157	49230	BB	Spacer, V/P	3
160	49238	NBR	O-ring, seat, inlet – 90D	3
	129593	FPM	O-ring, seat, inlet – 70D	3
161	49237	S	Seat inlet	3

162	49235	PTFE	Back-up-ring, seat, discharge	3
163	49236	NBR	O-ring, seat, discharge – 70D	3
	129594	FPM	<i>O-ring, seat, discharge – 70D</i>	3
164	49234	S	Seat, discharge	3
165	49198	PVDF	Retainer, spring, inlet	3
166	48793	SS	Valve	6
167	43751	S	Spring	6
168	49199	PVDF	Retainer, spring, discharge	3
172	14176	NBR	O-ring, valve plug – 70D	3
	77319	FPM	<i>O-ring, valve plug – 70D</i>	3
173	49232	PTFE	Back-up ring, valve plug	3
174	49239	BB	Plug, valve	3
177	126783	STCP R	Screw, HSH (M12x25)	8
178	49227	BB	Cover, valve	1
183	49462	BB	Plug, pulsator port (1/8" NPTM)	1
185	49197	FBB	Manifold, discharge	1
188	126519	STCP R	Screw, HSH (M12x70)	6
250	30764	NY	<i>Protector, shaft w/2 screws</i>	1
255	30264	STZP	<i>Mount, direct</i>	1
260	30613	STZP R	<i>Mount rail assy</i>	1
	990550	STZP R	<i>Mount rail assy (required on diesel/gas)</i>	1
269	30206	F	<i>Pulley (10") (see TB 003)</i>	1
270	30059	STL	<i>Hub "H" (M30) (keyway M8) (see TB 003)</i>	1
	990012	STL	<i>Hub "B" (M30) (keyway M8) (see TB 003)</i>	1
283	34334	-	<i>Kit, oil drain (3/8"x 24")</i>	1
299	818385	FBB	<i>Head, complete w/NBR seals and O-rings</i>	1
300	31862	NBR*	<i>Kit, seal (incl. 97,106,112,127,155,156) standard</i>	1
	76862	FPM*	<i>Kit, seal (incl. 97,106,112,127,155,156)</i>	1
	76162	STHT	<i>Kit, seal (incl. 97,106,112,127,155,156,160-168)</i>	1
310	31872	NBR	<i>Kit, valve (incl.160-168,172,173) standard</i>	1
	76872	FPM	<i>Kit, valve (incl.160-168,172,173)</i>	1
-	76560	-	<i>Pulsator assy</i>	1

* Review individual parts in each kit for material code identification.

Italics are optional items. R Components comply with RoHS directive.

+ Production parts are different than service parts.

See 'Tech Bulletins' 002, 003, 024, 035, 036, 043, 053, 074, 077, 083 and 118 for additional information.

Material codes: (not part or part number)

ABS	ABS plastic	FBR	Fiber	SBZ	304SS / Bronze
AL	Aluminum	FCM	Forged chrome-moly	ST 2	Special PTFE 2
ALE	Aluminum Epoxy	FPM	Fluorocarbon	STCP	Steel / chrome plated
BB	Brass	NBR	Medium nitrile (Buna-N)	STG	Special blend PTFE white
BZ	Bronze	NY	Nylon	STHT	Special PTFE high temp.
CC	Ceramic	PE	Polyethylene	STL	Steel
CM	Chrome-moly	POP	Polypropylene	STZP	Steel / zinc plated
CU	Copper	PTFE	Pure polytetrafluoroethylene		
F	Cast iron	PVDF	Polyvinylidene fluoride		
FBB	Forged brass	S	304SS		