



Technical specifications and instructions



3 Frame Plunger pump

Brass models

230, 240, 270

Specifications (*)

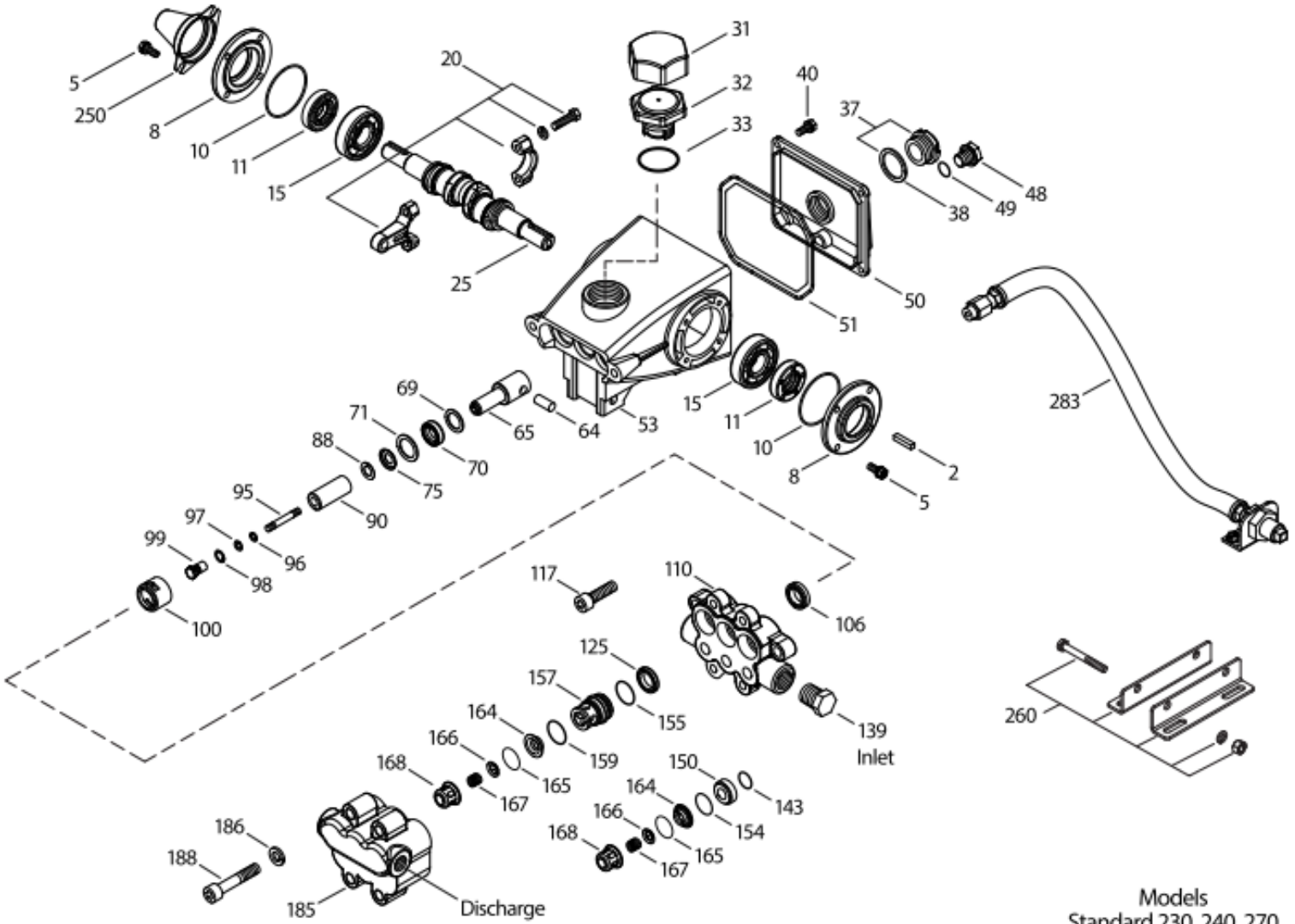
	Model 230	Model 240	Model 270
Flow	7,2 l/min	11,2 l/min	13,2 l/min
Pressure range	7 to 105 bar	7 to 85 bar	7 to 105 bar
RPM	1420 RPM	1420 RPM	1420 RPM
Inlet pressure range	Flooded to 4,1 bar	Flooded to 4,1 bar	Flooded to 4,1 bar
Stroke	7,3 mm	11 mm	12,7 mm

Common specifications

Bore	18 mm
Crankcase capacity	0,45 l
Maximum liquid temperature	71° C
Inlet ports (2)	1/2" NPTF
Discharge ports (2)	3/8" NPTF
Shaft diameter	16,5 mm
Weight	6,3 kg
Dimensions	267 x 223 x 134 mm

(*) Abnormalities permitted only after consultation and written confirmation from Cat Pumps.

Exploded View



Models
Standard 230, 240, 270
November 2016

Parts list

Item	Num.	Mat.	Description	Qty
	230			
	240			
	270			
2	30047	STL	Key (M5x5x24)	1
5	125824	STCP R	Screw, HHC sems (M6x16)	8
8	27950	AL	Cover, bearing	2
10	26536	NBR	O-ring, oil seal case – 70D	2
11	24159	NBR	Seal, oil	2
15	14487	STL R	Bearing, ball	2
20	48867	TNM	Rod, connecting assembly (09/02)	3
25	46946	FCM	Crankshaft, dual end - (230)	1
	46951	FCM	Crankshaft, dual end - (240)	1
	108062	FCM	Crankshaft, dual end - (270)	1
31	828710	PE	Protector, oil cap w/foam gasket	1
32	43211	ABS	Cap, oil filler	1
33	14177	NBR	O-ring, oil filler cap – 70D	1
37	92241	-	Gauge, oil, bubble w/gasket – 80D	1
38	44428	NBR	Gasket, flat, oil gauge – 80D	1
40	126541	STCP R	Screw, HHC sems (M6x20)	6
48	25625	STCP	Plug, drain (1/4" x 19 BSP)	1
49	23170	NBR	O-ring, drain plug – 70D	1
50	48772	AL	Cover, rear (see TB 104)	1
51	48773	NBR	O-ring, rear cover (see TB 104)	1
53	128354	AL	Crankcase (see TB 104)	1
64	16948	CM	Pin, crosshead	3
65	45114	SSZZ	Rod, plunger	3
69	126259	STCP R	Washer, oil seal (M24)	3
70	25301	NBR	Seal, oil – 80D	3
71	126189	STCP R	Washer, oil seal	3
75	43900	S	Slinger, barrier	3
88	45697	S	Washer, keyhole (M18x10)	3
90	43901	CC	Plunger (M18x43)	3
95	126550	STCP R	Stud, plunger retainer (M6x43)	3
96	43235	PTFE	Back-up-ring, plunger retainer	3
97	17399	NBR	O-ring, plunger retainer – 80D	3
	14160	FPM	O-ring, plunger retainer – 80D	3
	# 46204	EPDM	O-ring, plunger retainer – 70D	3
	701715	IPFE	O-ring, plunger retainer	3
98	45891	CU	Gasket, plunger retainer (M12,5)	3
99	46504	S	Retainer, plunger (M6)	3
100	28597	PVDF	Retainer, seal	3
106	43243	NBR	Seal, LPS w/S-Spg	3
	44926	FPM	Seal, LPS w/SS-Spg	3
	#46651	EPDM	Seal, LPS w/SS-Spg	3
	702390	SFTA	Seal, LPS w/SS-Spg	3
	76052	ST4	Seal, HPS w/S	3
	76243	ST2	Seal, LPS w/S-Spg	3
110	43902	BB	Manifold, inlet	1
117	126520	STCP R	Screw, HHC sems (M10x35)	2
125	43245	SNG	Seal, HPS w/S	3
	44925	FPM	Seal, HPS w/SS	3
	46652	HT	Seal, HPS 'Hi-temp', 2-pc w/S-support	3
	701382	SFTA	Seal, HPS w/SS	3
139	22179	BBCP	Plug, inlet (1/2" NPTM)	1
143	17547	NBR	O-ring, inlet valve adapter, rear – 85D	3

	11685	FPM	O-ring, inlet valve adapter, rear – 85D	3
	#46648	EPDM	O-ring, inlet valve adapter, rear – 70D	3
	703308	IPFE	O-ring, inlet valve adapter, rear – 85D	3
150	43904	BB	Adapter, inlet valve	3
154	43893	NBR	O-ring, inlet valve adapter, front – 80D	3
	44927	FPM	O-ring, inlet valve adapter, front	3
	#46649	EPDM	O-ring, inlet valve adapter, front – 80D	3
	703307	IPFE	O-ring, inlet valve adapter, front – 80D	3
155	26089	NBR	O-ring, discharge valve adapter, rear – 80D	3
	11377	FPM	O-ring, discharge valve adapter, rear – 80D	3
	#46647	EPDM	O-ring, discharge valve adapter, rear – 80D	3
	703244	IPFE	O-ring, discharge valve adapter, rear – 75D	3
157	43905	BB	Adapter, discharge valve	3
159	26089	NBR	O-ring, discharge valve adapter, front – 80D	3
	11377	FPM	O-ring, discharge valve adapter, front – 80D	3
	#46647	EPDM	O-ring, discharge valve adapter, front – 80D	3
	703244	IPFE	O-ring, discharge valve adapter, front – 75D	3
164	44002	S	Seat	6
165	44001	NBR	O-ring, seat – 80D	6
	44928	FPM	O-ring, seat – 80D	6
	#46650	EPDM	O-ring, seat – 80D	6
	703309	IPFE	O-ring, seat – 80D	6
166	43723	S	Valve	6
167	43750	S	Spring	6
168	43907	S	Retainer, spring	6
185	43903	BB	Manifold, discharge	1
186	126231	STCP R	Lockwasher (M10)	4
188	126515	STCP R	Screw, HSH (M1x55)	4
250	25130	STCP	Protector, shaft	1
260	30612	STZP	Mount, rail, assy	1
265	30651	-	Kit, mounting (incl. 30612, 30246, 25130)	1
270	30246	STL	Assy pulley & key (incl. 30032, 30047) (see TB 003)	1
283	34334	-	Kit, oil drain	1
299	814611	BB	Head, complete w/NBR Seals & O-rings	1
300	30914	NBR	Kit, seal (incl.97,106,125,143,154,155,159,165) standard	1
	33609	FPM	Kit, seal (incl.97,106,125,143,154,155,159,165)	1
	#33914	EPDM*	Kit, seal (incl.97,106,125,143,154,155,159,165)	1
	33915	HT	Kit, seal (incl.97,106,125,143,154,155,159,165) Hi-temp	1
	30735	STHT	Kit, seal (incl.97,106,125,143,154,155,159,165) Hi-temp	1
	76660	IPFE	Kit, seal (incl.97,106,125,143,154,155,159,165) Hi-temp	1
310	30915	NBR	Kit valve (incl.143,154,159,164,165,166,167,168) standard	1
	31214	FPM	Kit valve (incl.143,154,159,164,165,166,167,168)	1
	#31215	EPDM	Kit valve (incl.143,154,159,164,165,166,167,168)	1
	76690	IPFE	Kit valve (incl.143,154,159,164,165,166,167,168)	1

Bold print part numbers are unique to a particular pump model. Italics are optional items. { } Date of latest production change.
Silicone oil/grease required. R Components comply with RoHS Directive. * Review material codes for individual items (HT generally may be used as alternate). See 'Tech Bulletins' 002, 003, 024, 035, 036, 043, 067, 073, 074, 077, 083 and 104 for additional information.

Material codes: (not part or part number)

ABS	ABS plastic	FPM	Fluorocarbon	SNG	Special blend (Buna)
AL	Aluminium	HT	High Temp (EPDM alternative)	SSZZ	316SS/zamac
BB	Brass	IPFE	I-Perfluorelastomer	STCP	Steel/chrome plated
BBCP	Brass/chrome plated	NBR	Medium nitrile (Buna-N)	STHT	Special PTFE high Temp
CC	Ceramic	PE	Polyethylene	STL	Steel
CM	Chrome-moly	PTFE	Pure polytetrafluorethylene	STZP	Steel/zinc plated
CU	Copper	PVDF	Polyvinylidene fluoride	ST2	Special PTFE 2
EPDM	Ethylene propylene diene monomer	S	304SS	ST4	Special PTFE 4
FCM	Forged chrome-moly	SFTA	Special blend PTFE	TNM	Special high strength