



## Technical specifications and instructions



### **38 Frame Block-Style Stainless Steel Plunger pump**

**Standard models**

**3801, 3811**

**Flushed models**

**3801K, 3811K**

### Specifications (\*)

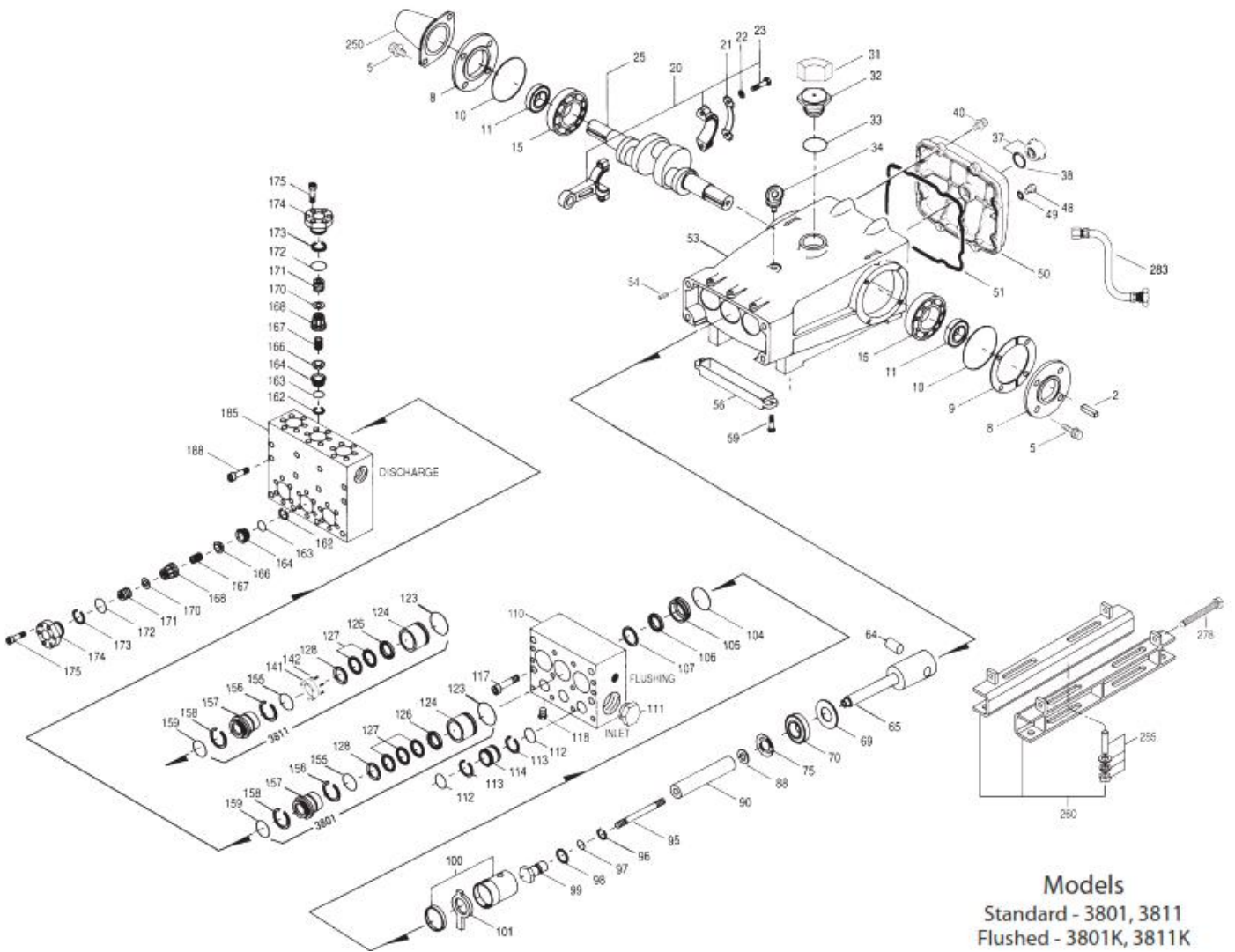
	<b>Model 3801-3801K</b>	<b>Model 3811-3811K</b>
<b>Flow</b>	38 L/min	53 l/min
<b>Pressure range</b>	7 to 345 bar	7 to 210 bar
<b>RPM</b>	900 RPM	800 RPM
<b>Bore</b>	20 mm	25 mm

### Common specifications

<b>Inlet pressure range</b>	Flooded to 4,9 bar
<b>Stroke</b>	48 mm
<b>Crankcase capacity</b>	4 L
<b>Maximum liquid temperature</b>	71° C
<b>Inlet ports (2)</b>	1-1/2" NPTF
<b>Flushing ports (2)</b>	1/2" NPTF
<b>Discharge ports (2)</b>	1" NPTF
<b>Shaft diameter</b>	35 mm
<b>Weight</b>	77 kg
<b>Dimensions</b>	628 x 460 x 238 mm

(\*) Abnormalities permitted only after consultation and written confirmation from Cat Pumps.

# Exploded View



**Models**  
Standard - 3801, 3811  
Flushed - 3801K, 3811K

# Parts list

Item	Num. 3801 3801K	Mat.	Num. 3811 3811K	Mat.	Description	Qty
2	34021	STL	34021	STL	Key (M10x8x70)	1
5	125753	S	125753	S	Screw, HH sems (M8x25)	8
8	44542	AL	44542	AL	Cover, bearing	2
9	815279	FBR	815279	FBR	Shim, split 2-pc	0-2
10	12398	NBR	12398	NBR	O-ring, bearing cover – 70D	2
11	13296	NBR	13296	NBR	Seal, oil, crankshaft	2
15	29326	STL	29326	STL	Bearing, roller	2
20	121467	TNM	121467	TNM	Rod, connecting assy (incl 21,22,23) {10/00}	3
21	126749	STCP R	126749	STCP R	Washer, locking (M10)	3
22	126593	STCP R	126593	STCP R	Washer, flat (M10)	6
23	122045	STZP	122045	STZP	Screw, HH (M10x55)	6
25	29325	FCM	29325	FCM	Crankshaft, dual end (M48)	1
31	828710	PE	828710	PE	Protector, oil cap w/foam gasket	1
32	43211	ABS	43211	ABS	Cap, oil filler	1
33	14177	NBR	14177	NBR	O-ring, oil filler cap – 70D	1
34	126743	STCP R	126743	STCP R	Bolt, eye (M12x1,75) (for lifting pump only)	1
37	92241	-	92241	-	Gauge, oil, bubble w/gasket – 80D	1
38	44428	NBR	44428	NBR	Gasket, flat, oil gauge – 80D	1
40	125753	S	125753	S	Screw, HH sems (M8 x 25)	8
48	25625	STCP	25625	STCP	Plug, drain (1/4" x 19 BSP)	1
49	23170	NBR	23170	NBR	O-ring, drain plug – 70D	1
50	45936	AL	45936	AL	Cover, rear	1
51	16612	NBR	16612	NBR	O-ring, cover – 70D	1
53	44487	AL	44487	AL	Crankcase assy (incl 34,54)	1
54	27488	S	27488	S	Pin, guide	2
56	27790	POP	27790	POP	Pan, oil	1
59	92538	S	92538	S	Screw, HHC sems (M6x16)	2
64	43864	CM	43864	CM	Pin, crosshead	3
65	<b>45118</b>	<b>SSZZ</b>	<b>45116</b>	<b>SSZZ</b>	Rod, plunger	3
69	126587	STCP R	126587	STCP R	Washer, oil seal	3
70	100488	NBRS	100488	NBRS	Seal, oil, crankcase	3
	44739	FPM	44739	FPM	Seal, oil, crankcase	3
75	<b>43506</b>	<b>S</b>	<b>43865</b>	<b>S</b>	Slinger, barrier	3
88	<b>45675</b>	<b>S</b>	<b>45676</b>	<b>S</b>	Washer, keyhole	3
90	<b>43945</b>	<b>CC</b>	<b>43866</b>	<b>CC</b>	Plunger (M20x145)(M25x145)	3
95	<b>89779</b>	<b>S</b>	<b>89778</b>	<b>SS</b>	Stud, plunger retainer (M7x123)(M10x135)	3
96	<b>20184</b>	<b>PTFE</b>	<b>20189</b>	<b>PTFE</b>	Back-up-ring, plunger retainer	3
97	<b>14190</b>	<b>NBR</b>	<b>11345</b>	<b>NBR</b>	O-ring, plunger retainer – 70D	3
	<b>14161</b>	<b>FPM</b>	<b>11375</b>	<b>FPM</b>	O-ring, plunger retainer	3
	<b># 48239</b>	<b>EPDM</b>	<b># 701490</b>	<b>EPDM</b>	O-ring, plunger retainer	3
98	<b>44069</b>	<b>SS</b>	<b>44085</b>	<b>SS</b>	Gasket, plunger retainer	3
99	<b>44068</b>	<b>SS</b>	<b>44084</b>	<b>SS</b>	Retainer, plunger (M7) (M10)	3
100	814279	PVDF	814279	PVDF	Retainer, seal, 2-pc (see TB 105)	3
101	<b>44095</b>	-	<b>44096</b>	-	Wick	3
104	43875	NBR	43875	NBR	O-ring, inlet adapter – 70D	3
	44826	FPM	44826	FPM	O-ring, inlet adapter – 70D	3
	<b># 701656</b>	<b>EPDM</b>	<b># 701656</b>	<b>EPDM</b>	O-ring, inlet adapter – 70D	3
105	<b>701344</b>	<b>SS</b>	<b>701323</b>	<b>SS</b>	Adapter, inlet	3
106	44071	NBR	44086	NBR	Seal, LPS w/SS-Spg	3
	<b>44381</b>	<b>FPM</b>	<b>45846</b>	<b>FPM</b>	Seal, LPS w/SS-Spg	3
	<b># 701974</b>	<b>SFTB*</b>	<b>701944</b>	<b>SFTA*</b>	Seal, LPS w/SS-Spg	3
107	<b>44074</b>	<b>SS</b>	<b>44089</b>	<b>SS</b>	Washer, LPS	3
110	<b>701286</b>	<b>SS</b>	<b>701286</b>	<b>SS</b>	Manifold, inlet, block-style ( <b>3801-3811</b> )	1
	<b>701408</b>	<b>SS</b>	<b>701408</b>	<b>SS</b>	Manifold, inlet, block-style, flushed, 1/2" inlet port ( <b>3801K-3811K</b> )	1
111	701116	SS	701116	SS	Plug, inlet (1-1/2" NPT)	1
112	701794	NBR	701794	NBR	O-ring, inlet spacer – 70D	6
	701318	FPM	701318	FPM	O-ring, inlet spacer – 75D	6
	<b># 701495</b>	<b>EPDM</b>	<b># 701495</b>	<b>EPDM</b>	O-ring, inlet spacer – 70D	6
113	701319	PTFE	701319	PTFE	Back-up-ring, inlet spacer	6
114	701317	SS	701317	SS	Spacer, inlet	3
117	701252	SS	701252	SS	Screw HSH (M14x100)	4
118	701077	SS	701077	SS	Plug (1/4" NPT) ( <b>3801-3811</b> )	3
123	12391	NBR	12391	NBR	O-ring, V-packing cylinder – 70D	3
	13266	FPM	13266	FPM	O-ring, V-packing cylinder – 70D	3
	<b># 701657</b>	<b>EPDM</b>	<b>701657</b>	<b>EPDM</b>	O-ring, V-packing cylinder – 70D	3
124	<b>701336</b>	<b>SS</b>	<b>701448</b>	<b>SS</b>	Cylinder, V-packing	3
126	<b>44164</b>	<b>SS</b>	<b>701325</b>	<b>SS</b>	Adapter, female	3

127	<b>44607</b>	<b>STG*</b>	<b>44610</b>	<b>STG*</b>	V-packing	9-6
128	<b>44165</b>	<b>SS</b>	<b>701326</b>	<b>SS</b>	Adapter, male	3
141	-	-	<b>45113</b>	<b>SS</b>	Spring, coil	15
142	-	-	<b>701447</b>	<b>SS</b>	Spacer w/coil springs	3
155	<b>17622</b>	<b>NBR</b>	<b>11379</b>	<b>NBR</b>	O-ring, V-packing spacer	3
	<b>11719</b>	<b>FPM</b>	<b>14183</b>	<b>FPM</b>	O-ring, V-packing spacer	3
	<b># 701654</b>	<b>EPDM</b>	<b># 701491</b>	<b>EPDM</b>	O-ring, V-packing spacer	3
156	<b>28675</b>	<b>PTFE</b>	<b>28243</b>	<b>PTFE</b>	Back-up-ring, V-packing spacer	3
157	<b>701352</b>	<b>SS</b>	<b>701385</b>	<b>SS</b>	Spacer, V-packing	3
158	<b>28675</b>	<b>PTFE</b>	<b>28243</b>	<b>PTFE</b>	Back-up-ring, V-packing spacer	3
159	<b>17622</b>	<b>NBR</b>	<b>11379</b>	<b>NBR</b>	O-ring, V-packing spacer	3
	<b>11719</b>	<b>FPM</b>	<b>14183</b>	<b>FPM</b>	O-ring, V-packing spacer	3
	<b># 701654</b>	<b>EPDM</b>	<b># 701491</b>	<b>EPDM</b>	O-ring, V-packing spacer	3
162	21985	PTFE	21985	PTFE	Back-up-ring, seat	6
163	26089	NBR	26089	NBR	O-ring, seat – 80D	6
	11377	FPM	11377	FPM	O-ring, seat – 80D	6
	<b># 46647</b>	<b>EPDM</b>	<b># 46647</b>	<b>EPDM</b>	O-ring, seat – 80D	6
164	44080	SS	44080	SS	Seat	6
166	44081	SS	44081	SS	Valve	6
167	44082	SS	44082	SS	Spring	6
168	44735	PVDF	44735	PVDF	Retainer, spring	6
170	44794	SS	44794	SS	Washer, spring retainer	6
171	44793	SS	44793	SS	Spring, coil, valve plug	6
172	15853	NBR	15853	NBR	O-ring, valve plug – 70D	6
	11720	FPM	11720	FPM	O-ring, valve plug – 70D	6
	<b># 701481</b>	<b>EPDM</b>	<b># 701481</b>	<b>EPDM</b>	O-ring, valve plug – 70D	6
173	20224	PTFE	20224	PTFE	Back-up-ring, valve plug	6
174	701260	SS	701260	SS	Plug, valve	6
175	87951	S	87951	S	Screw, HSH, Valve plug (M10x30)	36
185	<b>701314</b>	<b>SS</b>	<b>701785</b>	<b>SS</b>	Manifold, discharge, block-style	1
188	701279	S	701279	S	Screw HSH (M12x100)	12
196	701342	SS	701342	SS	Plug, discharge (1" NPT)	1
250	44516	NY	44516	NY	Protector, shaft (w/2 screws, lockwashers, washers) (incl with pump)	1
255	34039	S	34039	S	Assy, direct mount	1
260	92674	STZP	92674	STZP	Mount, rail, assy (incls:34018)	1
275	990013	STL	990013	STL	Hub, "B" (35mm w/keyway) (see TB 003)	1
278	80540	ZP	80540	ZP	Screw, HH (M12x100) (rail adjusting screw)	1
279	30278	STZP	30278	STZP	Oiler	3
281	30967	-	30967	-	Glass, oiler	3
282	10069	NBR	10069	NBR	Gasket, oiler	3
283	34314	-	34314	-	Kit, oil drain (3/8"x 48")	1
299	<b>901388</b>	<b>SS</b>	<b>901370</b>	<b>SS</b>	Head, complete, block-style (3801-3811)	1
	<b>901389</b>	<b>SS</b>	<b>901371</b>	<b>SS</b>	Head, complete, block-style (3801K-3811K)	1
300	<b>701786</b>	<b>NBR*</b>	<b>701793</b>	<b>NBR*</b>	Kit, seal (incl. 97,104,106,112,113,123,127,155,156,158,159)	1
	<b>33251</b>	<b>FPM*</b>	<b>701802</b>	<b>FPM*</b>	Kit, seal (incl. 97,104,106,112,113,123,127,155,156,158,159)	1
	<b># 33141</b>	<b>EPDM*</b>	<b># 701803</b>	<b>EPDM*</b>	Kit, seal (incl. 97,104,106,112,113,123,127,155,156,158,159)	1
310	34151	NBR	34151	NBR	Kit, valve (incl. 162,163,164,166,167,168,170,172,173)	2
	701798	FPM	701798	FPM	Kit, valve (incl. 162,163,164,166,167,168,170,172,173)	2
	<b># 701799</b>	<b>EPDM</b>	<b># 701799</b>	<b>EPDM</b>	Kit, valve (incl. 162,163,164,166,167,168,170,172,173)	2
-	819000	F	819000	F	Assembly, crankcase, cast iron conversion	1
370	990663	-	990663	-	Assembly, flushing, 19L, 115V, 1.1 Amp, 1/2"NPT (3801K-3811K)	1
390	711500	SS	711500	SS	C.A.T. (Captive Acceleration Tube)	1
391	711506	SS	711506	SS	Adapter (2 per C.A.T.)	1
392	701818	SS	701818	SS	Elbow assy used with adapter assy 711506	1

**Bold print part numbers are unique to a particular pump model. Italics are optional items. { }** Date of latest production change.  
# silicone oil/grease required. R Components comply with RoHS directive. \* Review individual parts in each kit for material identification.  
See 'Tech Bulletins' 002, 003, 024, 035, 036, 041, 043, 053, 074, 077, 083, 095 and 105 for additional information.  
**C.A.T. highly recommended for pressurized inlet, R.O. and industrial applications.**

Material codes: (not part or part number)

ABS	ABS plastic	NBR	Medium nitrile (Buna-N)	SFTB	Special blend PTFE black
AL	Aluminum	NBRs	Buna, silicone free	SS	316SS
CC	Ceramic	NY	Nylon	SSZZ	316SS / zamak
CM	Chrome-moly	PE	Polyethylene	STCP	Steel / chrome plated
EPDM	Ethylene propylene diene mon.	POP	Polypropylene	STG	Special blend PTFE white
F	Cast iron	PTFE	Pure polytetrafluoroethylene	STL	Steel
FBR	Fiber	PVDF	Polyvinylidene fluoride	STZP	Steel / zinc plated
FCM	Forged chrome-moly	S	304SS	TNM	Special high strength
FPM	Fluorocarbon	SFTA	Special blend PTFE tan	ZP	Zinc plated