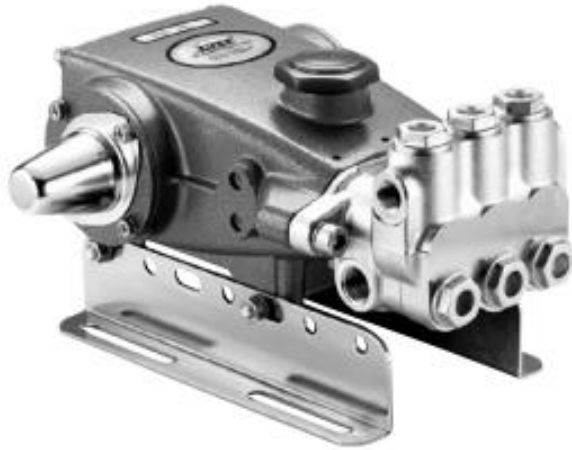




Technical specifications and instructions



5 Frame Plunger pump

Sleeved models

310S, 340S, 350S

Specifications (*)

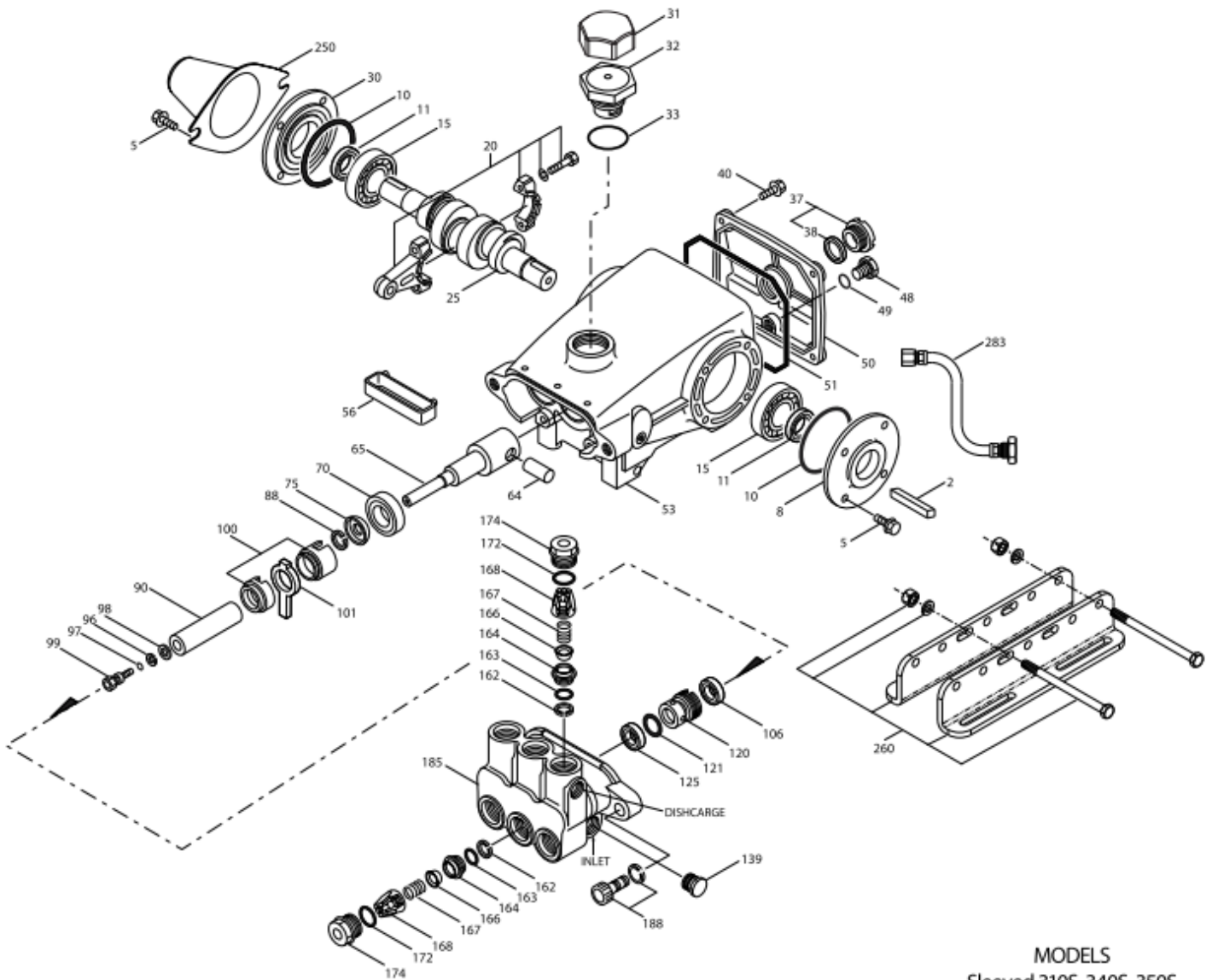
| | 310S <i>Belt drive</i> | 340S <i>Direct drive</i> | 350S <i>Direct drive</i> |
|-----------------------------|----------------------------------|------------------------------------|------------------------------------|
| Flow | 15 l/min | 13 l/min | 15,5 l/min |
| Pressure range | 7 to 150 bar | 7 to 150 bar | 7 to 150 bar |
| RPM | 950 RPM | 1420 RPM | 1420 RPM |
| Inlet pressure range | -0,35 to 4 bar | Flooded to 4 bar | Flooded to 4 bar |
| Stroke | 18 mm | 10 mm | 12 mm |

Common specifications

| | |
|-----------------------------------|--------------------|
| Bore | 20 mm |
| Crankcase capacity | 0,55 l |
| Maximum liquid temperature | 71° C |
| Inlet ports (2) | 1/2" NPTF |
| Discharge ports (2) | 3/8" NPTF |
| Shaft diameter | 20 mm |
| Weight | 9 kg |
| Dimensions | 298 x 254 x 133 mm |

(*) Abnormalities permitted only after consultation and written confirmation from Cat Pumps.

Exploded View



MODELS
Sleeved 310S, 340S, 350S
May 2015

Parts list

| Item | Num. | Mat. | Description | Qty |
|------|--------------|------------|---|-----|
| 2 | 30057 | STL | Key (M6x6x25) | 1 |
| 5 | 125824 | STCP R | Screw, HHC, sems (M6x16) | 8 |
| 8 | 43344 | AL | Cover, bearing | 2 ½ |
| 10 | 43343 | NBR | O-ring, bearing cover – 70D | 2 |
| 11 | 43222 | NBR | Seal, oil, crankshaft | 2 ½ |
| 15 | 14480 | STL | Bearing, ball | 2 |
| 20 | 45883 | HS | Rod, connecting assy {09/05} | 3 |
| 25 | 43342 | FCM | Crankshaft, dual end – M18 - 310S | 1 |
| | 44945 | FCM | Crankshaft, single end – M10 - 340S | 1 |
| | 43838 | FCM | Crankshaft, dual end – M12 - 350S | 1 |
| 30 | 44949 | AL | Cover, blind shaft (340S) | 1 |
| 31 | 828710 | - | Protector, oil cap w/foam gasket | 1 |
| 32 | 43211 | ABS | Cap, oil filler | 1 |
| 33 | 14177 | NBR | O-ring, filler cap – 70D | 1 |
| 37 | 92241 | - | Gauge, oil, bubble w/gasket | 1 |
| 38 | 44428 | NBR | Gasket, flat, oil gauge – 80D | 1 |
| 40 | 126541 | STCP R | Screw, HHC, sems (M6x20) | 4 |
| 48 | 25625 | STCP | Plug, drain (1/4" x 19 BSP) | 1 |
| 49 | 23170 | NBR | O-ring, drain plug – 70D | 1 |
| 50 | 48772 | AL | Cover, rear {10/1} (see TB 090) | 1 |
| 51 | 48773 | NBR | O-ring, rear cover {10/1} (see TB 090) | 1 |
| 53 | 48769 | AL | Crankcase {05/02} (see TB 090) | 1 |
| 56 | 43355 | POP | Pan, oil | 1 |
| 64 | 43351 | CM | Pin, crosshead | 3 |
| 65 | 43365 | ZZCP | Rod, plunger | 3 |
| 70 | 43228 | NBR | Seal, oil, crankcase | 3 |
| 75 | 43328 | S | Slinger, barrier | 3 |
| 88 | 45697 | S | Washer, keyhole (M18x10) | 3 |
| 90 | 43367 | CC | Plunger (M20x72) | 3 |
| 96 | 43235 | PTFE | Back-up-ring, plunger retainer | 3 |
| 97 | 17399 | NBR | O-ring, plunger retainer – 80D | 3 |
| | 14160 | FPM | O-ring, plunger retainer – 80D | 3 |
| | # 46204 | EPDM | O-ring, plunger retainer – 70D | 3 |
| 98 | 45891 | CU | Gasket | 3 |
| 99 | 104360 | S | Retainer, plunger w/stud | 3 |
| 100 | 45688 | PVDF | Retainer, seal (2pc) {04/06} (see TB 105) | 3 |
| 101 | 43302 | - | Wick, long tab | 3 |
| 106 | 43305 | NBR | Seal, LPS w/S-Spg | 3 |
| | 45153 | FPM | Seal, LPS w/SS-Spg | 3 |
| | # 48429 | EPDM | Seal, LPS w/SS-Spg | 3 |
| | 76305 | ST2 | Seal, LPS w/S-Spg | 3 |
| 120 | 45679 | BB | Case, seal | 3 |
| 121 | 14200 | NBR | O-ring, seal case – 70D | 3 |
| | 11719 | FPM | O-ring, seal case | 3 |
| | # 48907 | EPDM | O-ring, seal case | 3 |
| 125 | 43307 | SNG | Seal, HPS w/S | 3 |
| | 44936 | FPM | Seal, HPS w/SS | 3 |
| | 46667 | HT | Seal, HPS 'Hi-temp', 2-pc w/S-support | 3 |
| 139 | 22179 | BBCP | Plug, inlet (1/2" NPTM) | 1 |
| 162 | 48361 | D | Back-up-ring, seat | 6 |
| 163 | 43358 | NBR | O-ring, seat – 70D | 6 |
| | 44938 | FPM | O-ring, seat – 70D | 6 |

| | | | | |
|-----|---------------|-------------|--|---|
| | # 48908 | EPDM | O-ring, seat | 6 |
| 164 | 43725 | S | Seat | 6 |
| 166 | 43723 | S | Valve | 6 |
| 167 | 43750 | S | Spring, valve | 6 |
| 168 | 44565 | PVDF | Retainer, valve spring | 6 |
| 172 | 17615 | NBR | O-ring, valve plug – 75D | 6 |
| | 15855 | FPM | O-ring, valve plug – 70D | 6 |
| | # 48431 | EPDM | O-ring, valve plug – 75D | 6 |
| 174 | 43849 | BBCP | Plug, valve | 6 |
| 185 | 46278 | BBCP | Head, manifold | 1 |
| 188 | 126520 | STCP R | Screw, HSH, sems (M10x35) | 2 |
| 250 | 118672 | STCP | Protector, shaft (belt drive only) | 1 |
| 255 | 30243 | STZP | Mount, direct (belt drive only) | 1 |
| 260 | 30611 | STZP | Mounting, angle rail (belt drive only) | 1 |
| 265 | 30659 | - | Mount, assy (incl. 30611 30633 118672) (belt drive only) | 1 |
| 270 | 30633 | STL | Assy, pulley & key (incl. 30058,30057) (belt drive only) | 1 |
| 275 | 30944 | STL | Assy, hub & key (incl. 30057, 30945) (belt drive only) | 1 |
| 283 | 34334 | - | Kit, oil drain (3/8"x24") (see individual datasheet) | 1 |
| | 76334 | - | Kit, oil indicator (3/8"x24") (see individual datasheet) | 1 |
| 299 | 816551 | BBCP | Head, complete standard | 1 |
| 300 | 30623 | NBR | Kit, seal (incl. 97,101,106,121,125) standard | 1 |
| | 34155 | FPM | Kit, seal (incl. 97,101,106,121,125) | 1 |
| | 33623 | HT | Kit, seal 'Hi Temp' (incl. 97,101,106,121,125) | 1 |
| | # 31163 | EPDM* | Kit, seal (incl. 97,101,106,121,125) | 1 |
| 310 | 30821 | NBR | Kit, valve, preassembled (incl. 162-164,166-168,172) standard | 2 |
| | 31821 | FPM | Kit, valve, preassembled (incl. 162-164,166-168,172) | 2 |
| | # 31162 | EPDM | Kit, valve, preassembled (incl. 162-164,166-168,172) | 2 |
| 350 | 30696 | STZP | Plier, Reverse | 1 |
| 351 | 33004 | STZP | Socket, seal case (1/2" drive) | 1 |

Bold print part numbers are unique to a particular pump model. Italics are optional items.

Silicone oil/grease required. R Components comply with RoHS Directive.

{ } Date of latest production change. * Review individual parts in each kit for material code identification.

See 'Tech Bulletins' 002, 003, 008, 024, 027, 032, 035, 036, 043, 045, 046, 049, 052, 053, 054, 073, 074, 077, 079, 083, 090, 105 for additional information.

Material codes: (not part or part number)

| | | | | | |
|------|-----------------------------|------|------------------------------|------|-------------------------------|
| ABS | ABS plastic | FBB | Forged brass | S | 304SS |
| AL | Aluminium | FCM | Forged chrome-moly | SBCP | Special brass / chrome plated |
| BB | Brass | FPM | Fluorocarbon | SNG | Special blend (Buna) |
| BBCP | Brass/chrome plated | HS | High strength | ST2 | Special PTFE 2 |
| CC | Ceramic | HT | High Temp (EPDM alternative) | STL | Steel |
| CM | Chrome-moly | NBR | Medium nitrile (Buna-N) | STCP | Steel/chrome plated |
| CU | Copper | POP | Polypropylene | STZP | Steel/zinc plated |
| D | Acetal | PTFE | Pure polytetrafluorethylene | ZZCP | Chrome plated/steel zamac |
| EPDM | Ethylene propyl. diene mon. | PVDF | Polyvinylidene fluoride | | |