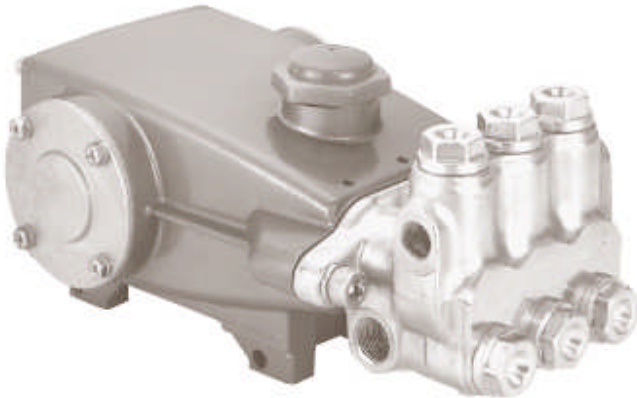




Technical specifications and instructions



**5 Frame
Plunger pump**

Standard Model 45

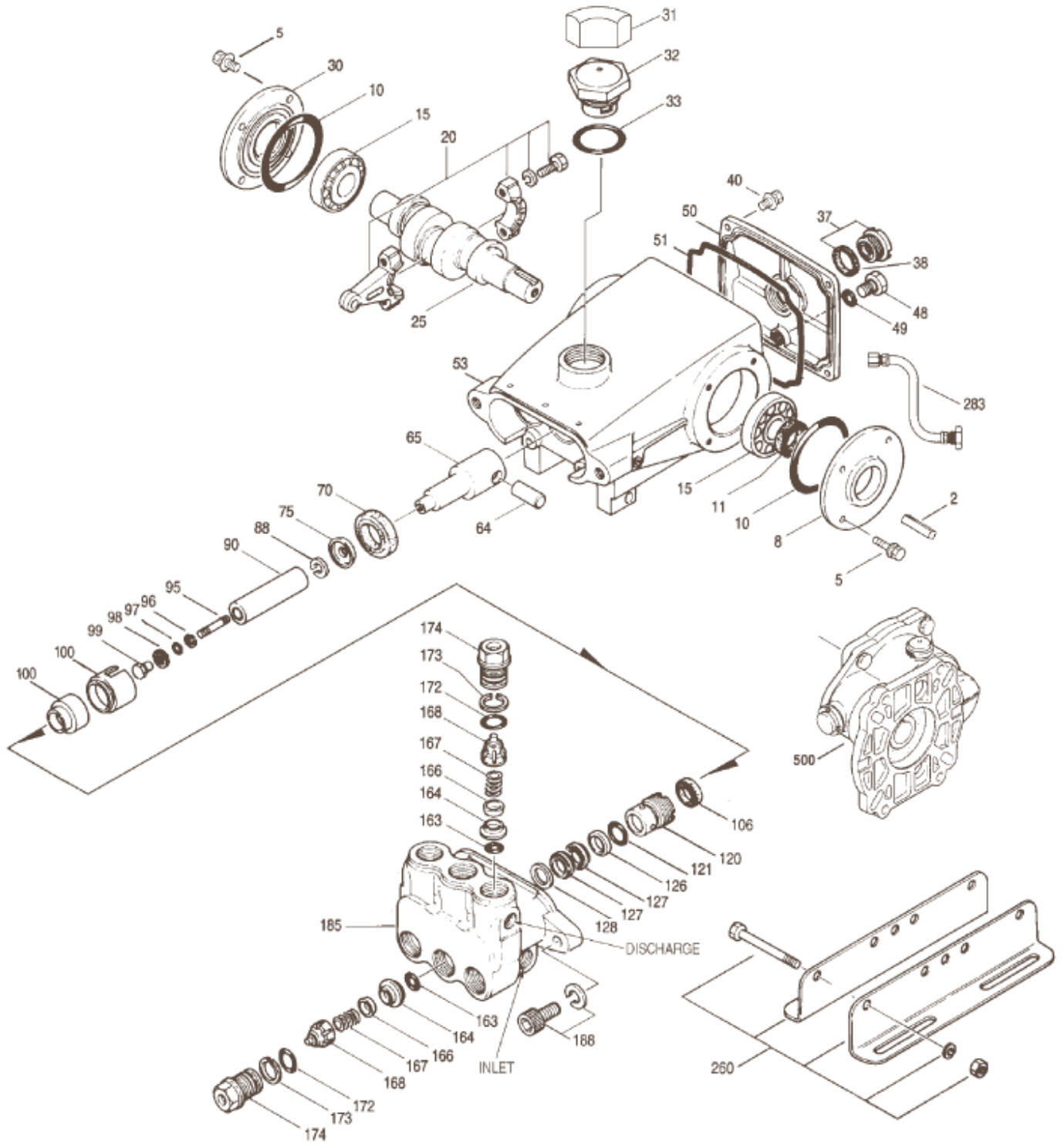
Gearbox Model 45G1

Specifications (*)

	Model 45	Model 45G1
Flow	17 l/min	17 l/min
Pressure range	7 to 245 bar	7 to 245 bar
RPM (pump)	1645 RPM	1645 RPM
RPM (engine)		3353 RPM
<u>Common specifications</u>		
Inlet pressure range		flooded to 4 bar
Bore		16 mm
Stroke		18 mm
Crankcase capacity		0,55 l
Maximum liquid temperature		71° C
Inlet ports (2)		1/2" NPTF
Discharge ports (2)		3/8" NPTF
Shaft diameter		20 mm
Weight (w/o gearbox)		9,6 kg
Dimensions		304,5 x 217,10 x 139 mm

(*) Abnormalities permitted only after consultation and written confirmation from Cat Pumps.

Exploded View



Parts list

Item	Num. 45 45G1	Mat.	Description	Qty
2	30057	STL	Key (M6x6x25)	1
5	96031	STZP	Screw, sems HHC (M8x16)	8
	126542	STCP R	Screw, sems HHC (M8x16)	8
8	45951	AL	Cover, bearing (M8)	1
10	43343	NBR	O-ring, bearing cover – 70D	2
11	43222	NBR	Seal, oil, crankshaft – 70D	1
15	14480	STL	Bearing, ball	2
20	45883	HS	Rod, connecting assy	3
25	45911	FCM	Crankshaft, single end (M18)	1
30	45953	AL	Cover, blind shaft (M8)	1
31	828710	-	Protector, oil cap w/foam gasket	1
32	44666	RTP	Cap, oil filler, domed	1
33	14177	NBR	O-ring, oil filler cap – 70D	1
37	92241	-	Gauge, oil, bubble w/gasket – 80D	1
38	44428	NBR	Gasket, flat, oil gauge – 80D	1
40	92519	STZP	Screw, sems HHC (M6x16)	4
	125824	STCP R	Screw, sems HHC (M6x16)	4
48	25625	STCP	Plug, drain (1/4" x 19 BSP)	1
49	23170	NBR	O-ring, drain plug – 70D	1
50	48777	AL	Cover, rear {5/02} (see TB 090)	1
51	48773	NBR	O-ring, rear cover {5/02} (see TB 090)	1
53	48778	AL	Crankcase (M8) {5/02} (see TB 090)	1
64	43351	CM	Pin, crosshead	3
65	45908	ZZCP	Rod, plunger	3
70	43228	NBR	Seal, oil, crankcase	3
75	43328	S	Slinger, barrier	3
88	45697	S	Washer, keyhole	3
90	45783	CC	Plunger (M16x72)	3
95	126558	STCP R	Stud, plunger retainer (M6x64,5)	3
96	43235	PTFE	Back-up-ring, plunger retainer	3
97	17399	NBR	O-ring, plunger retainer – 80D	3
	14160	FPM	O-ring, plunger retainer – 70D	3
98	45891	CU	Gasket, plunger retainer	3
99	46504	S	Retainer, plunger (M6)	3
100	45784	PVDF	Retainer, seal, 2 pc {04/06} (see TB 105)	3
106	43316	NBR	Seal, LPS w/S-Spg	3
	106660	FPM	Seal, LPS w/S-Spg	3
120	45789	BB	Case, seal	3
121	14200	NBR	O-ring, seal case – 70D	3
	11719	FPM	O-ring, seal case	3
126	43320	BB	Adapter, female	3
127	43319	SNG	V-packing	6
	46287	HT	V-packing (see TB 073)	6
128	43318	BB	Adapter, male	3
163	17547	NBR	O-ring, seat – 85D	6
	11685	FPM	O-ring, seat – 85 D	6
164	45790	S	Seat	6
166	45899	S	Valve	6
167	43750	S	Spring	6
168	44565	PVDF	Retainer, spring	6
172	17549	NBR	O-ring, valve plug – 70D	6
	26996	FPM	O-ring, valve plug – 70D	6
173	48365	D	Back-up-ring, valve plug	6

174	45900	BB	Plug, valve	6
185	45907	FBB	Head, manifold	1
188	126520	STCP R	Screw, sems HSH (M10x35)	2
260	30611	STZP R	Assy, angle rail B (2.09"x 9.45")	1
	30645	STZP R	Assy, angle rail A (2.95"x 11.81")	1
275	30944	STL	Hub & Key Assy, "H" series, M20 (M6 key) (incl. 30057,30945)(see TB 003)	1
283	34334	-	Kit, oil drain (3/8"x 24") (see TB 077)	1
300	30629	NBR	Kit, seal (incl.97,106,121,127)	1
	76629	FPM	Kit, seal (incl.97,106,121,127)	1
	31629	HT	Kit, seal (incl.97,106,121,127)	1
310	30683	NBR	Kit valve preassembled (incl.163,164,166,167,168,172,173)	2
	76683	FPM	Kit valve preassembled (incl.163,164,166,167,168,172,173)	2
350	30696	STZP	Plier, Reverse	1
351	43257	STZP	Tool, seal case removal	1
	33005	STZP	Socket, seal case (1/2" drive)	1
500	8065	-	Gearbox (see individual datasheet)	1

Italics are optional items. { } Date of latest production change. R Components comply with RoHS Directive.
See 'Tech Bulletins' 002, 003, 024, 035, 036, 043, 054, 060, 067, 074, 077, 083, 090 and 105 for additional information.

Material codes: (not part or part number)

AL	Aluminium	FCM	Forged chrome-moly	RTP	Reinforced composite
BB	Brass	FPM	Fluorocarbon	S	304SS
CC	Ceramic	HS	High strength	SNG	Special blend (Buna)
CM	Chrome-moly	HT	Hi-temp (EPDM alternative)	STCP	Steel/chrome plated
CU	Copper	NBR	Medium nitrile (Buna-N)	STL	Steel
D	Acetal	PTFE	Pure polytetrafluorethylene	STZP	Steel/zinc plated
FBB	Forged brass	PVDF	Polyvinylidene fluoride	ZZCP	Zamak / chrome plated