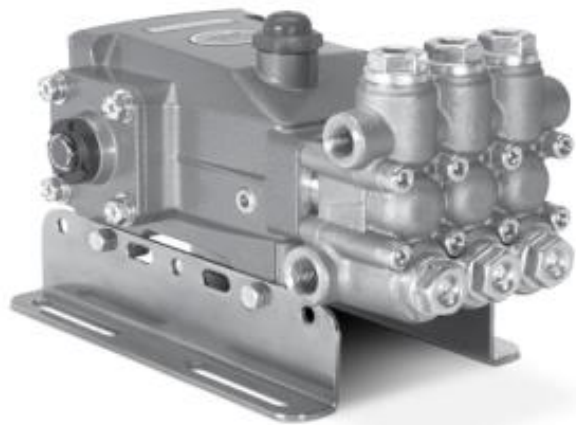




Technical specifications and instructions



5CP Plunger pump

Standard Models

5CP5140CSS

Gearbox Models

5CP5135CSSG1

5CP5140CSSG1

Specifications (*)

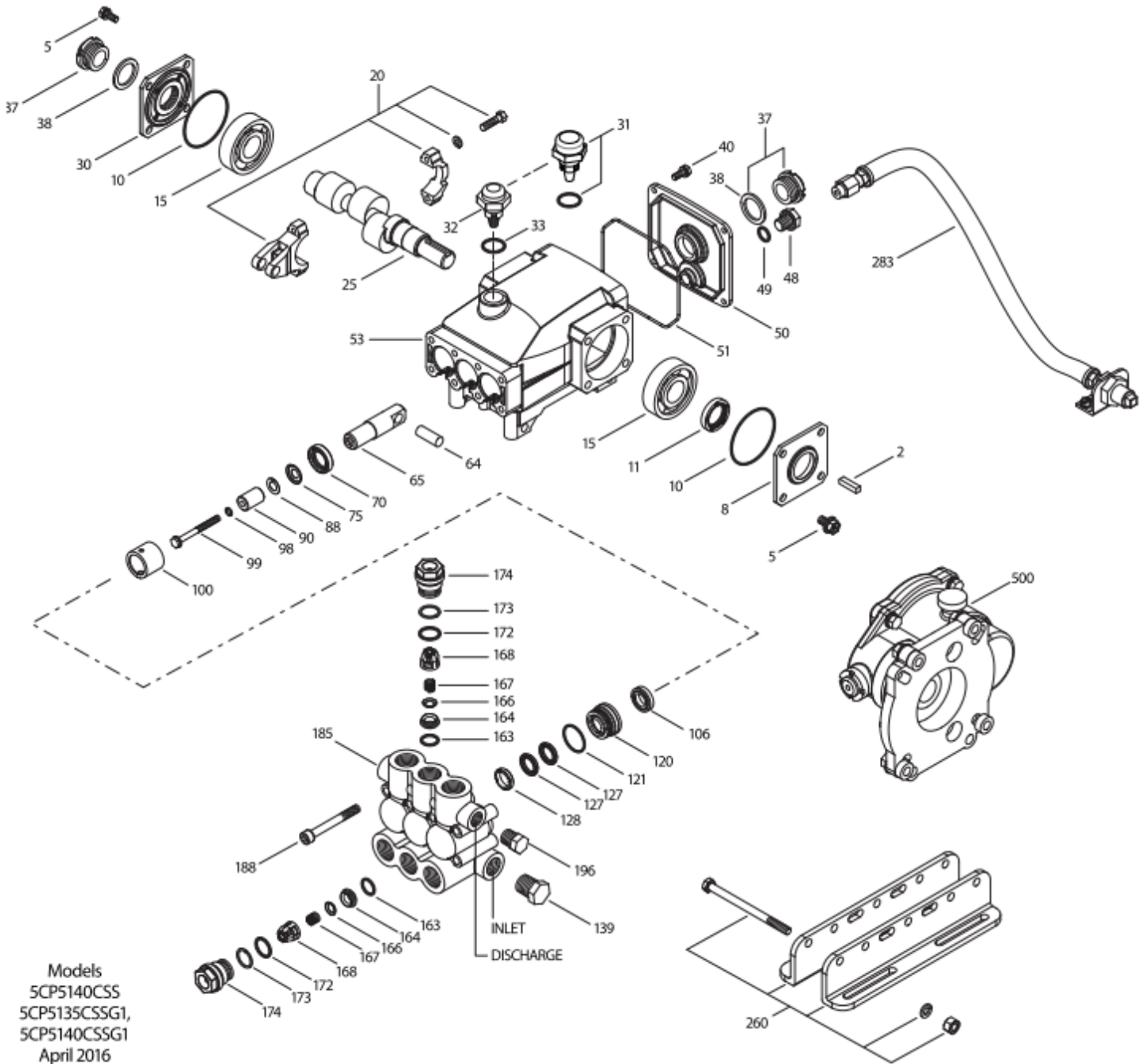
	Model 5CP5140CSS	Model 5CP5135CSSG1	Model 5CP5140CSSG1
Flow	21 l/min	19 l/min	21 l/min
Pressure range	7 to 245 bar	7 to 245 bar	7 to 245 bar
RPM pump	1500 RPM	1515 RPM	1500 RPM
RPM motor		3090 RPM	3060 RPM
Stroke	20 mm	18 mm	20 mm
Weight	9 kg	12 kg	12 kg

Common specifications

Bore	18 mm
Inlet pressure range	-2 to 4 bar
Crankcase capacity	0,51 L
Maximum liquid temperature	71° C
Inlet ports (2)	1/2" NPTF
Discharge ports (2)	3/8" NPTF
Shaft diameter	20 mm
Dimensions (pump only)	277 x 254 x 147 mm
Dimensions (with gearbox)	267 x 315 x 162 mm

(*) Abnormalities permitted only after consultation and written confirmation from Cat Pumps.

Exploded View



Models
 SCP5140CSS
 SCP5135CSSG1,
 SCP5140CSSG1
 April 2016

Parts list

5CP5140CSS			5CP5135CSSG1			5CP5140CSSG1		
2	30057	STL	30057	STL	Key (M6x6x25)			1
5	126542	STCP R	126542	STCP R	Screw, HHC sems (M8x16)			8
8	46910	AL	46910	AL	Cover, bearing			1
10	14028	NBR	14028	NBR	O-ring, bearing cover – 70D			2
11	43222	NBR	43222	NBR	Seal, oil, crankshaft – 70D			1
15	14480	STL	14480	STL	Bearing, ball			2
20	48742	TNM	48742	TNM	Rod, connecting assy {10/01}			3
25	-	-	48223	FCM	Crankshaft, single end, M18-5CP5135CSSG1			1
	49773	FCM	49773	FCM	Crankshaft, single end, M18-5CP5140CSS/CSSG1			1
30	49776	AL	49776	AL	Cover, bearing			1
31	127409	-	127409	-	Cap, vented w/O-ring (rain cap)			1
32	46798	-	46798	-	Cap, oil filler, domed			1
33	14179	NBR	14179	NBR	O-ring, oil filler cap – 70D			1
37	92241	-	92241	-	Gauge, oil, bubble w/gasket – 80D			2
38	44428	NBR	44428	NBR	Gasket, flat, oil gauge – 80D			2
40	125824	STCP R	125824	STCP R	Screw, HHC sems (M6x16)			4
48	25625	STCP	25625	STCP	Plug, drain (1/4"x19BSP)			1
49	23170	NBR	23170	NBR	O-ring, drain plug – 70D			1
50	46940	AL	46940	AL	Cover, rear			1
51	14044	NBR	14044	NBR	O-ring, rear cover			1
53	48617	AL	48617	AL	Crankcase			1
64	46746	CM	46746	CM	Pin, crosshead			3
65	48458	BBNP	48458	BBNP	Rod, plunger			3
70	46838	NBR	46838	NBR	Seal, oil, crankcase – 70D			3
75	43328	S	43328	S	Slinger, barrier			3
88	45697	S	45697	S	Washer, keyhole (M18x10)			3
90	49655	CC	49655	CC	Plunger (M18x50)			3
98	46730	NBR	46730	NBR	Washer, seal – 90D			3
	48394	FPM	48394	FPM	Washer, seal – 90D			3
	# 48432	EPDM	# 48432	EPDM	Washer, seal			3
99	+ 48201	SS	+ 48201	SS	Retainer, plunger w/stud (M6)			3
100	46749	PVDF	46749	PVDF	Retainer, seal			3
106	43243	NBR	43243	NBR	Seal, LPS w/S-Spg			3
	44926	FPM	44926	FPM	Seal, LPS w/SS-Spg			3
	# 46651	EPDM	# 46651	EPDM	Seal, LPS w/SS-Spg			3
	76243	ST2	76243	ST2	Seal, LPS w/S-Spg			3
120	49657	BB	49657	BB	Case, seal (press-in-style)			3
121	13978	NBR	13978	NBR	O-ring, seal case – 70D			3
	14329	FPM	14329	FPM	O-ring, seal case			3
	# 48904	EPDM	# 48904	EPDM	O-ring, seal case			3
127	44549	SNG	44549	SNG	V-packing			6
	45617	SFG	45617	SFG	V-packing			6
	48300	STG	48300	STG	V-packing			6
128	45618	BB	45618	BB	Adapter, male			3
139	22179	BBCP	22179	BBCP	Plug, inlet (1/2"NPTM)			1
163	17547	NBR	17547	NBR	O-ring, seat – 85D			6
	11685	FPM	11685	FPM	O-ring, seat – 85D			6
	# 46648	EPDM	# 46648	EPDM	O-ring, seat – 70D			6
164	45790	S	45790	S	Seat			6
166	46429	S	46429	S	Valve			6
167	43750	S	43750	S	Spring			6
168	+ 44565	PVDF	+ 44565	PVDF	Retainer, spring			6
172	17549	NBR	17549	NBR	O-ring, valve plug – 70D			6

	26996	FPM	26996	FPM	O-ring, valve plug – 70D	6
	# 49133	EPDM	# 49133	EPDM	O-ring, valve plug	6
173	48365	D	48365	D	Back-up-ring, valve plug	6
174	45900	BB	45900	BB	Plug, valve	6
185	46895	FBB	46895	FBB	Manifold, head	1
188	126513	STCP R	126513	STCP R	Screw, HSH (M8x70)	8
196	22187	BBCP	22187	BBCP	Plug, discharge (3/8"NPTM)	1
260	30611	STZP R	-	-	Mount, rail assy (4.22")	1
	30613	STZP R	-	-	Mount, rail assy (5.02")	1
	76513	STZP R	-	-	Mount, rail assy (5.52")	1
	30637	STZP	-	-	Mount, angle assy-retro fit (see TB 078)	1
283	34334	-	34334	-	Kit, oil drain (3/8" x 24") see individual datasheet	1
	76334	-	76334	-	Kit, oil indicator (3/8" x 24") see individual datasheet	1
299	814844	FBB	814844	FBB	Head, complete standard	1
300	33630	NBR	33630	NBR	Kit, seal (incls: 98,106,121,127) standard	1
	31350	FPM	31350	FPM	Kit, seal (incls: 98,106,121,127)	1
	76645	HT	76645	HT	Kit, seal (incls: 98,106,121,127)	1
	# 76630	EPDM	# 76630	EPDM	Kit, seal (incls: 98,106,121,127)	1
	76546	STHT	76546	STHT	Kit, seal (incls: 98,106,120,121,127)(prior to 2/09)	1
	76960	STHT	76960	STHT	Kit, seal (incls: 98,106,121,127) (after 2/09)	1
310	33060	NBR	33060	NBR	Kit, valve (incls: 163,164,166,167,168,172,173) standard	2
	31345	FPM	31345	FPM	Kit, valve (incls: 163,164,166,167,168,172,173)	2
	# 31735	EPDM	# 31735	EPDM	Kit, valve (incls: 163,164,166,167,168,172,173)	2
500	-	-	8076	-	Gearbox	1

Bold print numbers are unique to a particular pump model. Italics are optional items. { } Date of latest production change.
Silicone oil/grease required. + Production parts are different than repair parts. R Components comply with RoHS directive.
View 'Tech Bulletins' 002, 003, 024, 036, 043, 053, 060, 061, 064, 073, 074, 078 and 083 for additional information.

Material codes: (not part or part number)

AL	Aluminum	FCM	Forged chrome-moly	ST2	Special blend PTFE grey
BB	Brass	FPM	Fluorocarbon	STCP	Steel / chrome plated
BBCP	Brass / chrome plated	HT	Hi-Temp (EPDM alternative)	STG	Special blend PTFE white
BBNP	Brass nickel plated	NBR	Medium nitrile (Buna-N)	STHT	Special PTFE high temp
CC	Ceramic	PVDF	Polyvinylidene fluoride	STL	Steel
CM	Chrome-moly	S	304 stainless steel	STZP	Steel / zinc plated
D	Acetal	SFG	Special blend FPM	TNM	Special high strength
EPDM	Ethylene propylene diene mon.	SNG	Special blend (Buna)		
FBB	Forged brass	SS	316 stainless steel		