



Technical specifications and instructions



60 Frame Plunger pump

Standard brass model 6760

Stainless steel model 6761

Duplex SS model 6762

Nickel alum.bronze 6767

NAB flushed model 6767C

Specifications (*)

Model 6760-6761-6762-6767-6767C

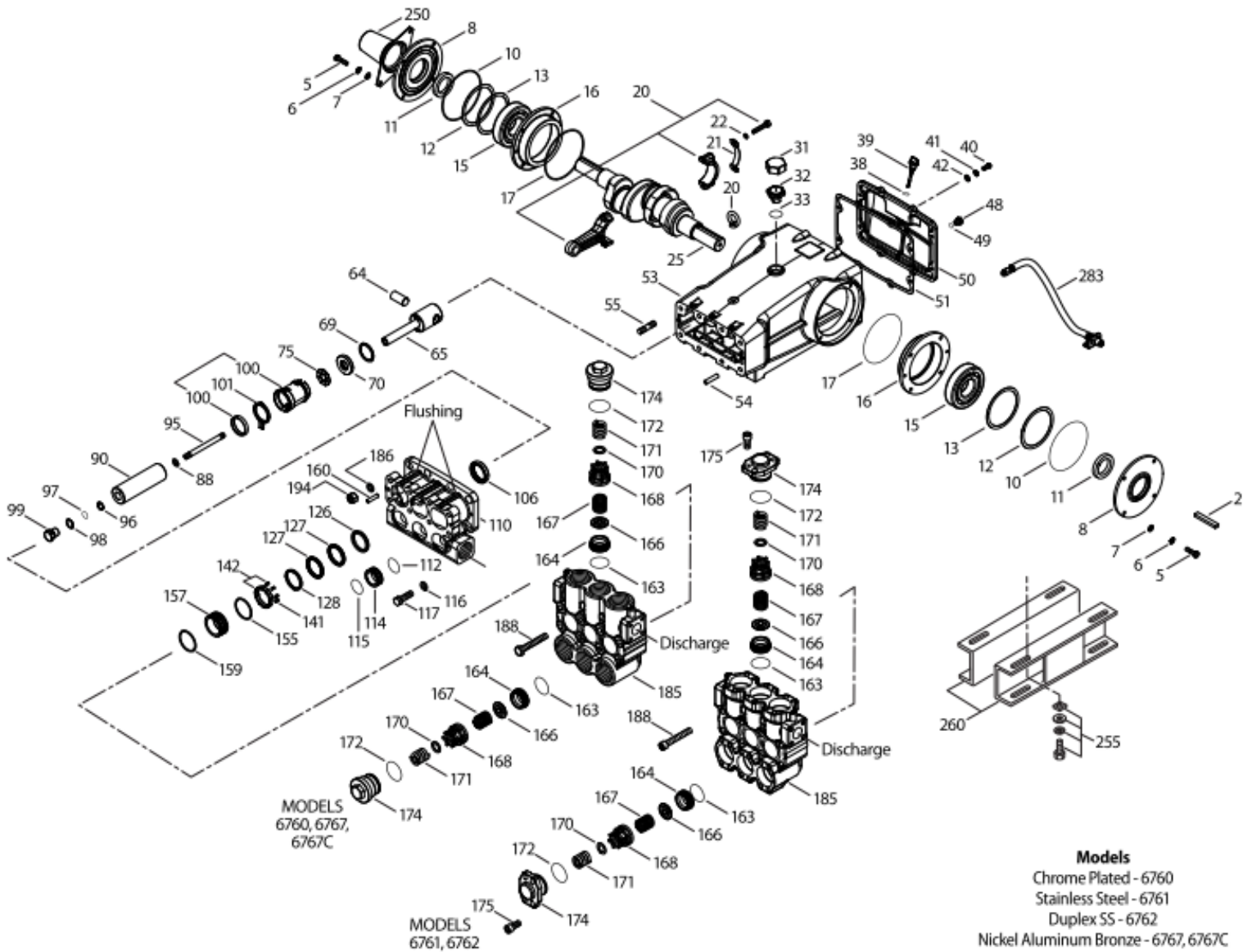
Flow 227 L/min
Pressure range 6,9 to 83 bar
RPM 520 RPM

Common specifications

Inlet pressure range Flooded to 3,5 bar
Bore 55 mm
Stroke 65,5 mm
Crankcase capacity 9,46 L
Maximum liquid temperature 60° C
Inlet ports (2) 2" NPTF
Flushed ports (2) 1/4" NPTF
Discharge ports (2) 1-1/4" NPTF
Shaft diameter 45 mm
Weight 151,95 kg
Dimensions (6760,6767,6767C) 791 x 619 x 454 mm
Dimensions (6761,6762) 780 x 619 x 443 mm

(*) Abnormalities permitted only after consultation and written confirmation from Cat Pumps.

Exploded View



Parts list

lt.	Num. 6760	Mat.	Num. 6761 6767	Mat.	Num. 6762	Mat.	Description	Qt
2	43048	STL	43048	STL	43048	STL	Key (M14x9x90)	1
5	126532	STCP R	89728	S	89728	S	Screw, HH (M10x40)	8
6	126231	STCP R	-	-	-	-	Lockwasher (M10)	8
7	126574	STCP R	19934	S	19934	S	Washer, flat (M10)	8
8	29443	AL	29443	AL	29443	AL	Cover, bearing, outer (see TB 118)	2
10	29444	NBR	29444	NBR	29444	NBR	O-ring, bearing cover – 70D	2
11	11443	NBR	11443	NBR	11443	NBR	Seal, oil, crankshaft – 70D	2
12	126594	STCP R	126594	STCP R	126594	STCP R	Washer, shim (M120 x 0.3)	0-2
13	126595	STCP R	126595	STCP R	126595	STCP R	Washer, shim (M120 x 0.5)	0-2
15	29441	STL	29441	STL	29441	STL	Bearing, roller	2
16	29442	STL	29442	STL	29442	STL	Cover, bearing, inner	2
17	29444	NBR	29444	NBR	29444	NBR	O-ring, bearing cover – 70D	2
20	126612	BBHS	126612	BBHS	126612	BBHS	Rod, connecting (incl.21,22)	3
21	126560	STCP R	126560	STCP R	126560	STCP R	Washer, locking	3
22	126593	STCP R	126593	STCP R	126593	STCP R	Washer, shim (M10.5 x 1.5)	6
25	29440	FCM	29440	FCM	29440	FCM	Crankshaft, dual end	1
31	<i>828710</i>	<i>PE</i>	<i>828710</i>	<i>PE</i>	<i>828710</i>	<i>PE</i>	<i>Protector, oil cap w/foam gasket</i>	1
32	43211	ABS	43211	ABS	43211	ABS	Cap, oil filler	1
33	14177	NBR	14177	NBR	14177	NBR	O-ring, oil filler cap – 70D	1
34	126743	STCP R	126743	STCP R	126743	STCP R	Bolt, eye (M12) (for lifting pump only)	1
38	129343	RBR	129343	RBR	129343	RBR	Gasket, flat flex	1
39	27769	ABS	27769	ABS	27769	ABS	Stick, dip	1
40	126531	STCP R	89627	S	89627	S	Screw, HH (M10x30)	8
41	126231	STCP R	15847	S	15847	S	Lockwasher (M10)	8
42	126574	STZP R	19934	S	19934	S	Washer, flat (M10)	8
48	25625	STCP	25625	STCP	25625	STCP	Plug, drain (1/4" x 19 BSP)	1
49	23170	NBR	23170	NBR	23170	NBR	O-ring, drain plug – 70D	1
50	29438	AL	29438	AL	29438	AL	Cover, rear (see TB 118)	1
51	129386	NBR	129386	NBR	129386	NBR	Gasket, rear cover	1
53	45303	AL	45303	AL	45303	AL	Crankcase w/guide pins (incl. 34,54) (see TB 118)	1
54	43282	S	43282	S	43282	S	Pin, guide	2
55	126553	STCP R	89615	S	89615	S	Stud (M16x70)	2
64	29481	CM	29481	CM	29481	CM	Pin, crosshead	3
65	+ 45384	SSZZ	45384	SSZZ	45384	SSZZ	Rod, plunger	3
69	126588	STCP R	126588	STCP R	126588	STCP R	Washer, oil seal	3
70	29454	NBR	29454	NBR	29454	NBR	Seal, oil – 80D	3
75	44752	NBR	44752	NBR	44752	NBR	Slinger, barrier – 85D	3
88	45677	SS	45677	SS	45677	SS	Washer, keyhole (M14)	3
90	44749	CC	44749	CC	44749	CC	Plunger (M55x185)	3
95	89783	S	44748	SS	44748	SS	Stud, plunger retainer (M14x147)	3
96	20214	PTFE	20214	PTFE	20214	PTFE	Back-up-ring, plunger retainer	3
97	17616	NBR	17616	NBR	17616	NBR	O-ring, plunger retainer – 80D	3
98	44751	SS	44751	SS	44751	SS	Gasket, plunger retainer	3
99	45276	S	44750	SS	48959	SSD	Retainer, plunger (M14)	3
100	855000	PVDF	855000	PVDF	855000	PVDF	Retainer, seal, 2-pc	3
101	44762	-	44762	-	44762	-	Wick, long tab (M55x185)	3
106	44757	NBR	44757	NBR	44757	NBR	Seal, LPS w/SS-spg	3
110	49457	NABC	45769	SS	48980	SSD	Manifold, inlet (6760-6761-6762)	1
	-	-	44754	NAB	-	-	Manifold, inlet (6767)	1
	-	-	49305	NAB	-	-	Manifold, inlet, flushed (6767C)	1
112	18175	NBR	18175	NBR	18175	NBR	O-ring, spacer, inner – 80D	3
114	+44767	SS	44767	SS	48957	SSD	Spacer, inlet manifold	3
115	18175	NBR	18175	NBR	18175	NBR	O-ring, spacer, outer – 80D	3
116	126569	STCP R	19086	S	19086	S	Lockwasher (M16)	4
117	126537	STCP R	89729	S	89729	S	Screw, HH (M16x55)	4
126	48392	D	48392	D	48392	D	Adapter, female (see TB 087)	3
	45771	SS	45771	SS	45771	SS	<i>Adapter, female</i>	3
127	44764	STG*	44764	STG*	44764	STG*	V-packing	6
128	+45772	SS	45772	SS	48962	SSD	Adapter, male	3

141	44943	SS	44943	SS	44943	SS	Coil spring, spacer	24
142	48501	BB	45383	SS	48982	SSD	Spacer w/coil springs	3
155	18178	NBR	18178	NBR	18178	NBR	O-ring, spacer – 80D	3
157	+45321	SS	45321	SS	48961	SSD	Spacer, V-packing	3
159	18178	NBR	18178	NBR	18178	NBR	O-ring, spacer – 80D	3
160	44756	S	44756	S	44756	S	Pin, guide	2
163	18176	NBR	18176	NBR	18176	NBR	O-ring, seat – 80D	6
164	+ 44772	SS	44772	SS	48964	SSD	Seat	6
166	+ 44774	SS	44774	SS	48958	SSD	Valve	6
167	44773	SS	44773	SS	44773	SS	Spring	6
168	44775	PVDF	44775	PVDF	44775	PVDF	Retainer, spring	6
170	+ 44776	SS	44776	SS	48956	SSD	Washer, retainer	6
171	44780	SS	44780	SS	44780	SS	Spring, coil, valve plug	6
172	18177	NBR	18177	NBR	18177	NBR	O-ring, valve plug – 80D	6
174	49461	NABC	48572	SSD	48572	SSD	Plug, valve {3/00} (6760,6761,6762)	6
	-	-	44778	NAB	-	-	Plug, valve {3/00} (6767)	6
175	-	-	48573	S	48573	S	Screw, HSH (M16x35) {3/00} (6761,6762)	24
185	49459	NABC	48489	SS	48984	SSD	Manifold, discharge {3/00} (6760,6761,6762)	1
	-	-	44769	NAB	-	-	Manifold, discharge {3/00} (6767)	1
186	126569	STCP R	19086	S	19086	S	Lockwasher (M16)	2
188	126744	STCP R	89694	S	89694	S	Screw, HSH (M16x110)	8
194	126525	STCP R	81291	S	81291	S	Nut, hex (M16)	2
250	29445	AL	29445	AL	29445	AL	Protector, shaft (incl. w/pump) (see TB 118)	1
255	33243	-	33243	-	33243	-	Kit, mount (included w/pump)	1
259	126604	STZP	126604	STZP	126604	STZP	Rail (included w/pump)	2
279	30429	STZP	30429	STZP	30429	STZP	Oiler (10 oz.)	3
283	34314	-	34314	-	34314	-	Kit, oil drain	1
299	816760	NABC	816667	SS	816865	SSD	Head, complete (6760,6761,6762)	1
	-	-	814820	NAB	-	-	Head, complete (6767)	1
300	34091	NBR*	34091	NBR*	34091	NBR*	Kit, seal (97,106,112,115,127,155,159) standard	1
310	+ 34092	NBR	34092	NBR	39400	NBR	Kit, valve (163,164,166,167,168,170,172) stand.	2
-	819010	F	819010	F	819010	F	Assy, crankcase, cast iron conversion	1
-	88902	STZP	88902	STZP	88902	STZP	Stud (M16x277) (removing DM, IM)	2

Bold print part numbers are unique to a particular pump model. Italics are optional items. { } Date of latest production change.

+ Production parts 304SS, replacement parts are 316SS. R Components comply with RoHS directive. * Review material codes for individual items. (STG generally may be used as alternate). See 'Tech Bulletins' 003, 024, 036, 043, 052, 053, 074, 082, 083, 084, 087, 095, 105 and 118 for additional information.

Material codes: (not part or part number)

ABS	ABS plastic	FCM	Forged chrome-moly	S	304 SS
AL	Aluminum	FPM	Fluorocarbon	SS	316 SS
BB	Brass	NAB	Nickel aluminum bronze	SSD	Duplex SS
BBHS	Brass / high strength	NABC	Nickel aluminum bronze chrome pl.	SSZZ	316 SS / zamak
CC	Ceramic	NBR	Medium nitrile (Buna-N)	STCP	Steel / chrome plated
CM	Chrome-moly	PE	Polyethylene	STG	Special blend PTFE white
D	Acetal	PTFE	Pure polytetrafluoroethylene	STL	Steel
F	Cast iron	PVDF	Polyvinylidene fluoride	STZP	Steel / zinc plated