



## Technical specifications and instructions



### **7 Frame Plunger pump**

#### **Standard models**

***56, 56.B01, 57, 60***

#### **Gearbox models**

***56G1, 60G1***

### Specifications (\*)

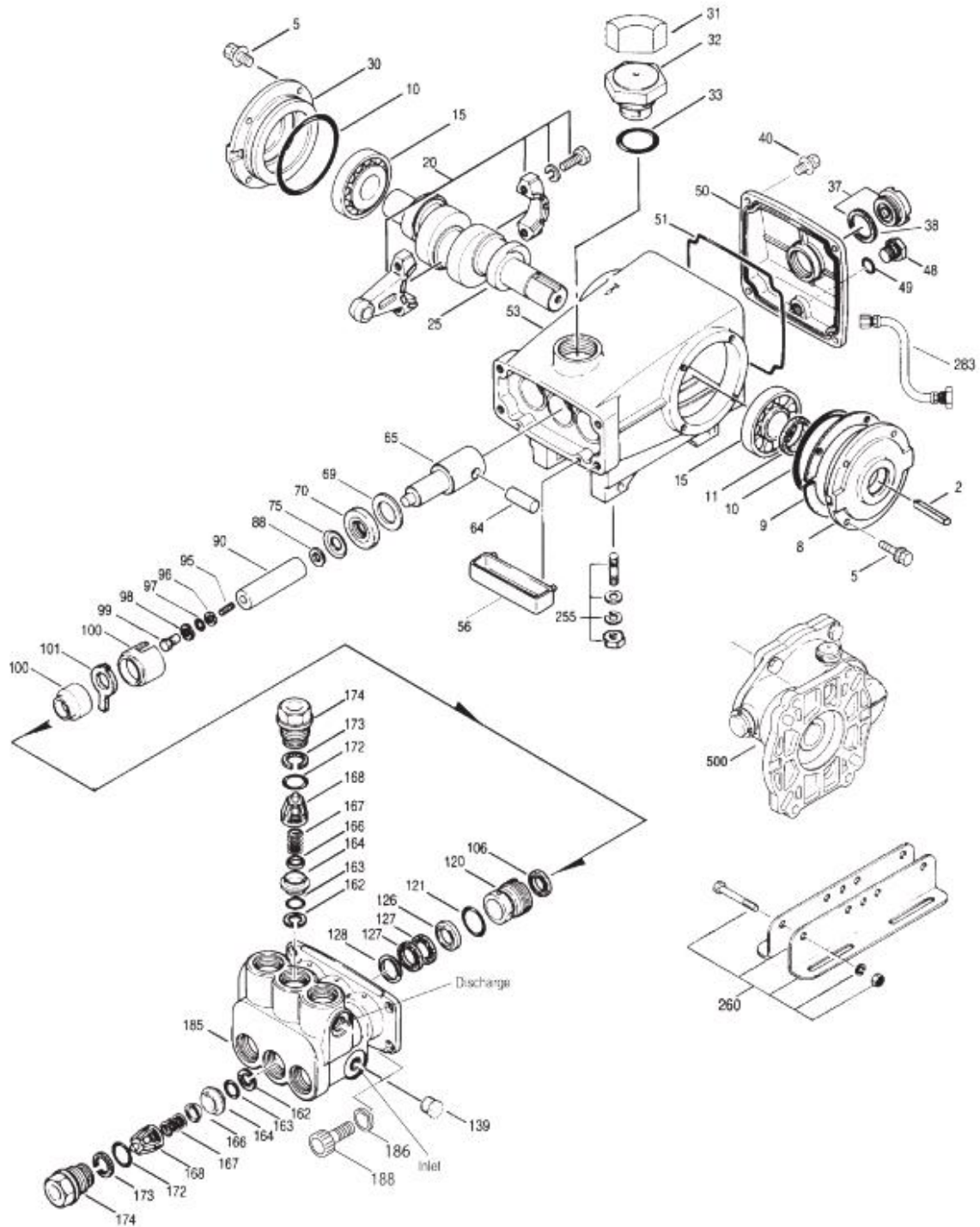
	<b>Model 56 56.B01</b>	<b>Model 56G1 or Alternate</b>	<b>Model 57</b>	<b>Model 60</b>	<b>Model 60G1</b>
<b>Flow</b>	25 l/min	30 l/min	19.5 l/min	16 l/min	17 l/min
<b>Pressure range</b>	7 to 190 bar	7 to 175 bar	7 to 245 bar	7 to 275 bar	7 to 275 bar
<b>RPM pump</b>	1450 RPM	1760 RPM	1450 RPM	1450 RPM	1570 RPM
<b>RPM engine</b>	-	3600 RPM	-	-	3200 RPM
<b>Stroke</b>	24 mm	24 mm	18,5 mm	15 mm	15 mm

### Common specifications

<b>Bore</b>	18 mm
<b>Inlet pressure range</b>	flooded to 4 bar
<b>Crankcase capacity</b>	0,75 l
<b>Maximum liquid temperature</b>	71° C
<b>Inlet ports (2)</b>	1/2" NPTF
<b>Discharge ports (2)</b>	3/8" NPTF
<b>Shaft diameter</b>	24 mm
<b>Weight</b>	13,3 kg
<b>Weight w/gearbox</b>	16,7 kg
<b>Dimensions</b>	354 x 208 x 163 mm

(\*) Abnormalities permitted only after consultation and written confirmation from Cat Pumps.

# Exploded View



# Parts list

Item	Num. 56 56.B01 57	Mat.	Num. 60	Mat.	Description	Qty
2	30067	STL	30067	STL	Key (M8x7,5x25)	1
5	92519	STZP	92519	STZP	Screw (M6x16)	4/8
	125824	STCP R	125824	STCP R	Screw (M6x16)	4/8
8	43223	AL	43223	AL	Cover, bearing {03/10}	1
9	815280	FBR	815280	FBR	Shim, split, 2-pc	1
10	12393	NBR	12393	NBR	O-ring, bearing cover	2
11	43222	NBR	43222	NBR	Seal, oil crankshaft – 70 D	1
15	43221	STL	43221	STL	Bearing, roller	2
20	48863	TNM	48863	TNM	Rod, connecting {06/02}	3
25	<b>43464</b>	<b>FCM</b>	-	-	Crankshaft, single end - (56)	1
	<b>44947</b>	<b>FCM</b>	<b>44591</b>	<b>FCM</b>	Crankshaft, single end - (57) (60)	1
30	44948	AL	44948	AL	Cover, bearing blind {03/10}	1
31	828710	PE	828710	PE	Protector, oil cap w/foam gasket	1
32	44666	RTP	44666	RTP	Cap, oil filler, domed-gearbox models	1
33	14177	NBR	14177	NBR	O-ring, oil filler cap – 70D	1
37	92241	-	92241	-	Gauge, oil, bubble w/gasket – 80D	1
38	44428	NBR	44428	NBR	Gasket, flat flex, oil gauge – 80D	1
40	92520	STZP	92520	STZP	Screw, HHC sems (M6x20)	4
	126541	STCP R	126541	STCP R	Screw, HHC sems (M6x20) (see TB 106)	4
48	25625	STCP	25625	STCP	Plug, drain (1/4" x 19 BSP)	1
49	23170	NBR	23170	NBR	O-ring, drain plug – 70D	1
50	127701	AL	127701	AL	Cover, rear {03/10}	1
51	14047	NBR	14047	NBR	O-ring, rear cover (see TB 106)	1
53	<b>127698</b>	<b>AL</b>	<b>129812</b>	<b>AL</b>	Crankcase (M10){03/10}	1
56	43240	POP	43240	POP	Pan, oil	1
64	43237	CM	43237	CM	Pin, crosshead	3
65	48913	SHS	48913	SHS	Rod, plunger, short {05/02}	3
69	126589	STCP R	126589	STCP R	Washer, oil seal	3
70	43228	NBR	43228	NBR	Seal, oil, crankcase	3
75	43328	S	43328	S	Slinger, barrier	3
88	45697	S	45697	S	Washer, keyhole (M18xM10)	3
90	43232	CC	43232	CC	Plunger (M18x77)	3
95	126559	STCP R	126559	STCP R	Stud, plunger retainer (M6x70)	3
96	43235	PTFE	43235	PTFE	Back-up-ring, plunger retainer	3
97	17399	NBR	17399	NBR	O-ring, plunger retainer – 80D	3
	14160	FPM	14160	FPM	O-ring, plunger retainer – 80D	3
98	45891	CU	45891	CU	Gasket, plunger retainer	3
99	46504	S	46504	S	Retainer, plunger (M6)	3
100	45689	PVDF	45689	PVDF	Retainer, seal, rear	3
101	43239	FBR	43239	FBR	Wick, long tab	3
106	43243	NBR	43243	NBR	Seal, LPS w/S-Spg	3
	44926	FPM	44926	FPM	Seal, LPS w/SS-Spg	3
120	45685	BB	45685	BB	Case, seal	3
121	20285	NBR	20285	NBR	O-ring, seal case – 70D	3
	11693	FPM	11693	FPM	O-ring, seal case	3
126	44550	BB	44550	BB	Adapter, female	3
127	44549	SNG	44549	SNG	V-packing	6
	45617	SFG	45617	SFG	V-packing	6
	48300	STG	48300	STG	V-packing	6
128	45618	BB	45618	BB	Adapter, male	3
139	43448	BB	43448	BB	Plug, inlet (1/2" NPT)	1

162	43248	PTFE	43248	PTFE	Back-up-ring, seat	6
163	43249	NBR	43249	NBR	O-ring, seat – 80D	6
	44383	<i>FPM</i>	44383	<i>FPM</i>	<i>O-ring, seat – 70D</i>	6
164	43722	S	43722	S	Seat	6
166	43721	S	43721	S	Valve	6
167	43751	S	43751	S	Spring	6
168	44564	PVDF	44564	PVDF	Retainer, spring	6
172	14179	NBR	14179	NBR	O-ring, valve plug – 70D	6
	15855	<i>FPM</i>	15855	<i>FPM</i>	<i>O-ring, valve plug – 70D</i>	6
173	20213	PTFE	20213	PTFE	Back-up-ring, valve plug	6
174	45939	BB	45939	BB	Plug, valve, extended	6
185	45937	FBB	45937	FBB	Head, manifold (M10)	1
186	49680	S	49680	S	Washer, spring (M10)	4
187	<b>46868</b>	<b>S</b>	-	-	Stud, manifold (M10 x 35) (only 56.B01)	4
188	49679	S	49679	S	Screw, HSH (M10x35) (not in 56.B01)	4
255	30243	<i>STZP</i>	30243	<i>STZP</i>	<i>Kit, direct mount</i>	1
260	30611	<i>STZP</i>	30611	<i>STZP</i>	<i>Assy, angle rail B (2.09" x 9.45")</i>	1
	30645	<i>STZP</i>	30645	<i>STZP</i>	<i>Assy, angle rail A (2.95" x 11.81")</i>	1
269	30206	<i>F</i>	30206	<i>F</i>	<i>Pulley, (10") AB (see TB 003)</i>	1
274	33000	<i>STL</i>	33000	<i>STL</i>	<i>Hub (M24), "H" series (see TB 003)</i>	1
283	34334	-	34334	-	<i>Kit, oil drain (see TB 077)</i>	1
299	814618	<i>FBB</i>	814618	<i>FBB</i>	<i>Head, complete</i>	1
300	30799	<i>NBR</i>	30799	<i>NBR</i>	<i>Kit, seal (incl.97,101,106,121,127)</i>	1
	34237	<i>FPM</i>	34237	<i>FPM</i>	<i>Kit, seal (incl.97,101,106,121,127)</i>	1
	76799	<i>HT</i>	76799	<i>HT</i>	<i>Kit, seal 'High-Temp'(97,101,106,121,127)</i>	1
310	33820	<i>NBR</i>	33820	<i>NBR</i>	<i>Kit valve (incl.162-168,172,173)</i>	2
	34238	<i>FPM</i>	34238	<i>FPM</i>	<i>Kit valve (incl.162-168,172,173)</i>	2
350	30696	<i>STZP</i>	30696	<i>STZP</i>	<i>Plier, Reverse</i>	1
351	43257	<i>STZP</i>	43257	<i>STZP</i>	<i>Tool, seal case removal</i>	1
	33005	<i>STZP</i>	33005	<i>STZP</i>	<i>Socket, seal case, ½" drive</i>	1
352	44050	<i>STZP</i>	44050	<i>STZP</i>	<i>Tool, oil gauge removal</i>	1
500	8071	-	8071	-	<i>Gearbox 1"</i>	1

**Bold print part numbers are unique to a particular pump model. Italics are optional items.**

{ } Date of latest production change. R Components comply with RoHS Directive.

See 'Tech Bulletins' 002, 003, 024, 027, 035, 036, 043, 051, 054, 058, 067, 074, 077, 083, 105 and 106 for additional information.

Material codes: (not part or part number)

AL	Aluminium	FPM	Fluorocarbon	SFG	Special blend FPM
BB	Brass	HT	High temperature	SHS	304 SS/ high strength
CC	Ceramic	NBR	Medium nitrile (Buna-N)	SNG	Special blend (Buna)
CM	Chrome-moly	PE	Polyethylene	STCP	Steel/chrome plated
CU	Copper	POP	Polypropylene	STG	Special blend PTFE white
F	Cast iron	PTFE	Pure polytetrafluorethylene	STL	Steel
FBB	Forged brass	PVDF	Polyvinylidene fluoride	STZP	Steel/zinc plated
FBR	Fiber	RTP	Reinforced composite	TNM	Special high strength
FCM	Forged chrome-moly	S	304SS		