



## Technical specifications and instructions



### **7 Frame Plunger pump**

**Model** **70**

**Gearbox Model** **70G1**

### Specifications (\*)

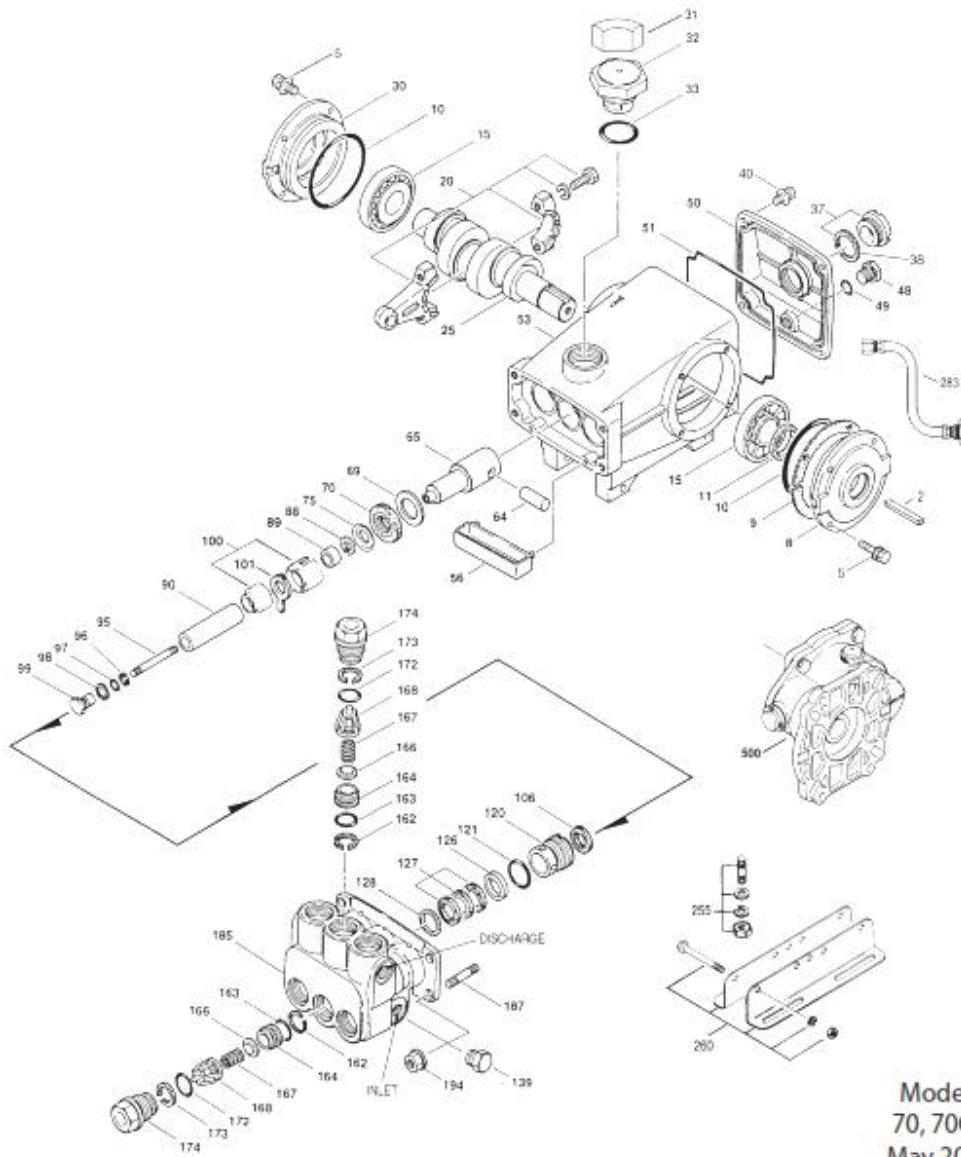
	<b>Model 70</b>	<b>Model 70G1</b>
<b>Flow</b>	15,5 l/min	17 l/min
<b>Pressure range</b>	7 to 345 bar	7 to 345 bar
<b>RPM</b>	1450 RPM	1700 RPM
<b>Inlet pressure range</b>	Flooded to 4 bar	Flooded to 4 bar
<b>Engine RPM</b>		3465 RPM
<b>Stroke</b>	24 mm	24 mm

### Common specifications

<b>Bore</b>	14 mm
<b>Crankcase capacity</b>	0,75 l
<b>Maximum liquid temperature</b>	71° C
<b>Inlet ports (2)</b>	1/2" NPTF
<b>Discharge ports (2)</b>	3/8" NPTF
<b>Shaft diameter</b>	24 mm
<b>Weight (w/o gearbox)</b>	16,4 kg
<b>Dimensions</b>	361 x 234 x 170 mm
<b>Dimensions w/gearbox</b>	361 x 273 x 208 mm

(\*) Abnormalities permitted only after consultation and written confirmation from Cat Pumps.

# Exploded View



Models  
70, 70G1  
May 2012

# Parts list

Item	Num. 70 70G1	Mat.	Description	Qty
2	30067	STL	Key (M8x7,5x25)	1
5	92519	STZP	Screw (M6x16)	8
	125824	STCP R	Screw (M6x16)	8
8	43466	AL	Cover, bearing	1
9	815280	FBR	Shim, split, 2 pc	1
10	12393	NBR	O-ring, bearing cover	2
11	43222	NBR	Seal, oil, crankshaft – 70D	1
15	43221	STL	Bearing, roller	2
20	48863	TNM	Rod, connecting {06/02}	3
25	119234	FCM	Crankshaft, single end	1
	46554	FCM	Crankshaft, single end (gearbox only)	1
30	44967	AL	Cover, blind bearing	1
31	828710	-	Protector, oil cap w/foam gasket	1
32	44666	RTP	Cap, oil filler, domed	1
33	14177	NBR	O-ring, oil filler cap – 70D	1
37	92241	-	Gauge, oil, bubble w/gasket – 80D	1
38	44428	NBR	Gasket, flat, oil gauge – 80D	1
40	92520	STZP	Screw (M6x20)	4
	126541	STCP R	Screw (M6x20)	4
48	25625	STCP	Plug, drain (1/4" x 19 BSP)	1
49	23170	NBR	O-ring, drain plug – 70D	1
50	127701	AL	Cover, rear	1
51	44836	NBR	O-ring, rear cover	1
53	127698	AL	Crankcase w/guide pins	1
56	43240	POP	Pan, oil	1
64	43237	CM	Pin, crosshead	3
65	48913	SHS	Rod, plunger, short {05/02}	3
69	126589	STCP R	Washer, oil seal	3
70	43228	NBR	Seal, oil, crankcase	3
75	43328	S	Slinger, barrier	3
88	45697	S	Washer, keyhole (M18)	3
89	46556	BB	Spacer	3
90	45890	CC	Plunger (M14x72)	3
95	126559	STCP R	Stud, plunger retainer (M6x70)	3
96	43235	PTFE	Back-up-ring, plunger retainer	3
97	17399	NBR	O-ring, plunger retainer – 80D	3
	14160	FPM	O-ring, plunger retainer – 70D	3
98	45891	CU	Gasket, plunger retainer	3
99	46504	S	Retainer, plunger (M6)	3
100	45689	PVDF	Retainer, seal, 2 pc	3
101	43571	-	Wick, long tab	3
106	45188	NBR	Seal, LPS w/S-Spg	3
	701790	SFTA	Seal, LPS w/SS-Spg	3
120	46566	BB	Case, seal	3
121	20285	NBR	O-ring, seal case – 70D	3
	11693	FPM	O-ring, seal case	3
126	45896	BB	Adapter, female	3
127	45895	SNG	V-packing	9
	48300	STG	V-packing	9
128	46567	BB	Adapter, male	3
139	43448	BB	Plug, inlet manifold (1/2" NPTM)	1

162	20937	PTFE	Back-up-ring, spiral, seat	6
163	17547	NBR	O-ring, seat – 85D	6
	11685	<i>FPM</i>	<i>O-ring, seat – 85 D</i>	6
164	46560	S	Seat	6
166	46562	S	Valve	6
167	43750	S	Spring	6
168	44565	PVDF	Retainer, spring	6
172	145952	NBR	O-ring, valve plug – 70D	6
	31932	<i>FPM</i>	<i>O-ring, valve plug – 75D</i>	6
173	46692	PTFE	Back-up-ring, spiral, valve plug	6
174	46581	BB	Plug, valve, extended	6
185	46558	FBB	Head, manifold (M10)	1
187	46868	S	Stud, manifold (M10x35)	4
194	126567	STCP R	Nut, flanged (M10)	4
255	30243	STZP	<i>Kit, direct mount</i>	1
260	30645	STZP R	<i>Assy, angle rail A</i>	1
	30611	STZP R	<i>Assy, angle rail B</i>	1
265	30660	-	<i>Kit, complete mounting (incl 30645,33000,30206,43256,30067)</i>	1
269	30206	F	<i>Pulley (10")</i>	1
274	33000	STL	<i>Hub (M24), H series</i>	1
283	34334	-	<i>Kit, oil drain (3/8" x 24") see individual datasheet</i>	1
	76334	-	<i>Kit, oil indicator (3/8" x 24") see individual datasheet</i>	1
299	814840	FBB	<i>Head, complete</i>	1
300	33799	NBR	<i>Kit, seal (incl.97,101,106,121,127)</i>	1
	31799	<i>FPM</i>	<i>Kit, seal (incl.97,101,106,121,127)</i>	1
310	33822	NBR	<i>Kit valve (incl.162,163,164,166,167,168,172,173)</i>	2
	31722	<i>FPM</i>	<i>Kit valve (incl.162,163,164,166,167,168,172,173)</i>	2
350	30696	STZP	<i>Plier, Reverse</i>	1
351	43257	STZP	<i>Tool, seal case removal</i>	1
352	44050	STZP	<i>Tool, oil gauge removal</i>	1
500	8071	-	<i>Gearbox 1"</i>	1

*Italics are optional items.* { } Date of latest production change. R Components comply with RoHS Directive.  
See 'Tech Bulletins' 002, 003, 024, 036, 043, 051, 054, 061, 064, 067, 074, 077 and 083 for additional information.

Material codes: (not part or part number)

AL	Aluminium	FPM	Fluorocarbon	SHS	304 SS / high strength
BB	Brass	HS	High strength	SNG	Special blend (Buna)
CC	Ceramic	NBR	Medium nitrile (Buna-N)	STCP	Steel/chrome plated
CM	Chrome-moly	POP	Polypropylene	STG	Special blend PTFE white
CU	Copper	PTFE	Pure polytetrafluorethylene	STL	Steel
F	Cast iron	PVDF	Polyvinylidene fluoride	STZP	Steel/zinc plated
FBB	Forged brass	RTP	Reinforced composite	TNM	Special high strength
FBR	Fiber	S	304SS		
FCM	Forged chrome-moly	SFTA	Special blend PTFE tan		