



Technical specifications and instructions



7CP Plunger pumps

Stainless steel **7CP6111**
7CP6111C

Flushed models **7CP6171**
7CP6171C

Gearbox model **7CP6111G1**

Specifications (*)

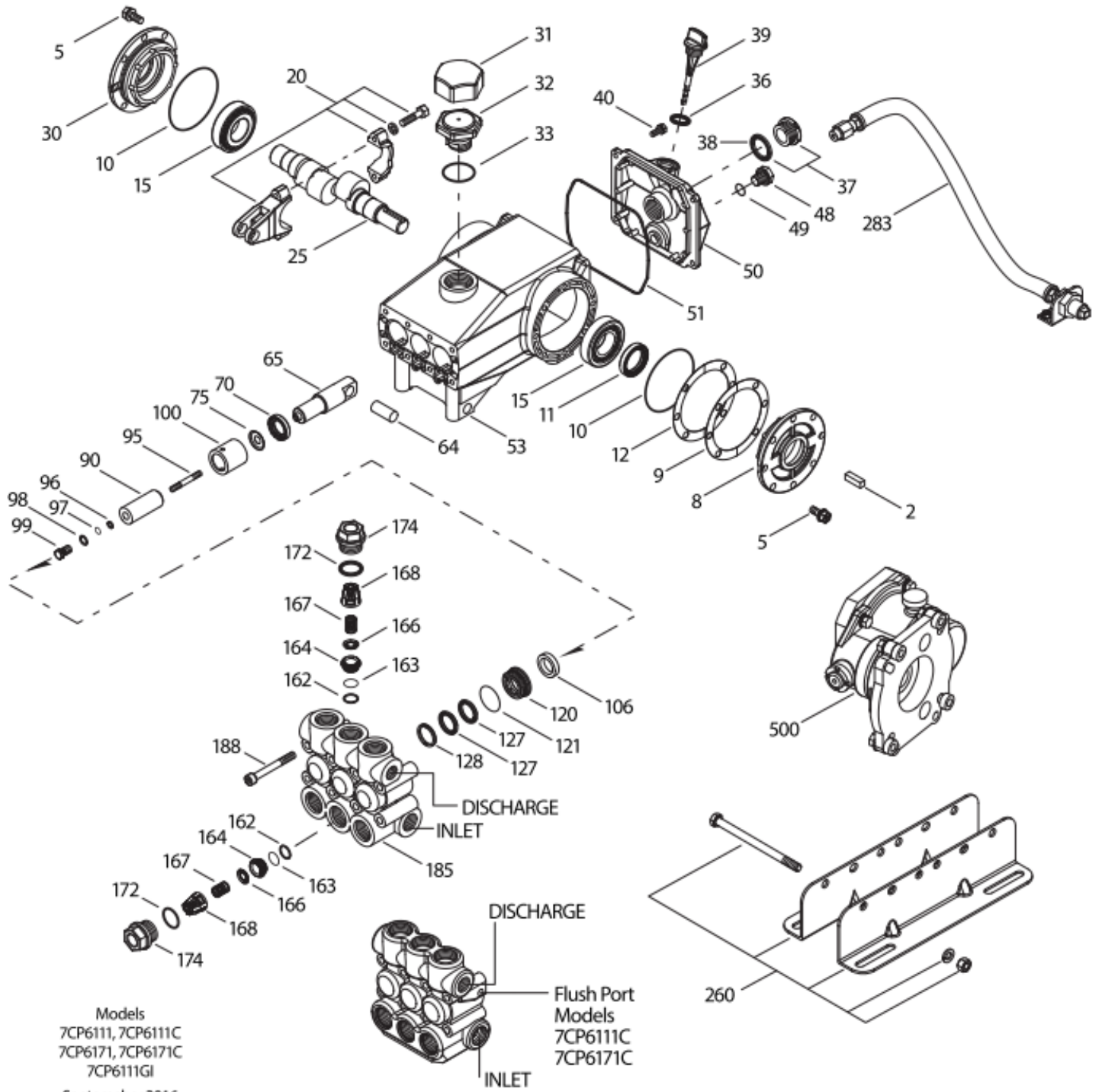
	Model 7CP6111(C)	Model 7CP6171(C)	Model 7CP6111G1
Flow	40 l/min	40 l/min	38 l/min
Pressure range	7 to 140 bar	7 to 140 bar	7 to 140 bar
RPM pump	1750 RPM	1450 RPM	1667 RPM
RPM engine	-	-	3400 RPM
Stroke	21,7 mm	26 mm	21,7 mm
Weight	13,2 kg	13,2 kg	17,5 kg
Dimensions	342 x 235 x 175 mm	342 x 235 x 175 mm	342 x 311 x 177 mm

Common specifications

Inlet pressure range	Flooded to 4.9 bar
Bore	22 mm
Crankcase capacity	1.15 L
Maximum liquid temperature	60° C
Inlet ports (2)	3/4" NPTF
Discharge ports (2)	1/2" NPTF
Flushing ports (2)	1/8" NPTF
Shaft diameter	24 mm

(*) Abnormalities permitted only after consultation and written confirmation from Cat Pumps.

Exploded View



Models
 7CP6111, 7CP6111C
 7CP6171, 7CP6171C
 7CP6111GI
 Septemeber 2016

Parts list

Item	Num.	Mat.	Description	Qty
2	30067	STL	Key (M8x7.5x25)	1
5	49651	S	Screw, HHC sems (M8x20)	8
8	49501	AL	Cover, bearing	1
9	49503	FBR	Shim, split, 2-pc, outer	0-2
10	12393	NBR	O-ring, bearing cover – 70D	2
11	49190	NBR	Seal, oil, crankshaft – 70D	1/2
12	49504	S	Shim, split, 2-pc, inner	0-2
15	63479	STL	Bearing, roller	2
20	48727	TNM	Rod, Connecting assembly {2/03}	3
25	49498	FCM	Crankshaft, single-end (M21,7)(7CP6111(C), 7CP6111G1)	1
	49649	FCM	Crankshaft, single-end (M26) (7CP6171(C))	1
30	48527	AL	Cover, blind bearing	1
31	828710	PE	Protector, oil cap w/foam gasket	1
32	43211	ABS	Cap, oil filler	1
33	14177	NBR	O-ring, oil filler cap – 70D	1
36	129343	RBR	Gasket, flat	1
37	92241	-	Gauge, oil, bubble w/gasket – 80D	1
38	44428	NBR	Gasket, flat, oil gauge – 80D	1
39	49948	ABS	Stick, dip (see reference Bulletin 005)	1
40	92538	S	Screw, HHC sems (M6x16)	4
48	25625	STCP	Plug, drain (1/4" x 19 BSP)	1
49	23170	NBR	O-ring, drain plug – 70D	1
50	46959	AL	Cover, rear	1
51	14030	NBR	O-ring, rear cover – 70D	1
53	48577	AL	Crankcase	1
64	46969	CM	Pin, crosshead	3
65	49637	SS	Rod, plunger	3
70	48281	NBR	Seal, oil, crankcase – 70D	3
75	43328	S	Slinger, barrier	3
90	48559	CC	Plunger, ceramic (M22x55)	3
95	49639	SS	Stud, plunger retainer (M6x50)	3
96	43235	PTFE	Back-up-ring, plunger retainer	3
97	17399	NBR	O-ring, plunger retainer – 80D	3
	14160	FPM	O-ring, plunger retainer – 80D	3
	# 46204	EPDM	O-ring, plunger retainer – 70D	3
98	44041	SS	Gasket	3
99	44031	SS	Retainer, plunger (M6)	3
100	46964	NY	Retainer, seal	3
106	49644	NBR	Seal, LPS w/SS-Spg	3
	49704	FPM	Seal, LPS w/SS-Spg	3
	# 48650	EPDM	Seal, LPS w/SS-Spg	3
	76704	ST	Seal, LPS w/S-Spg	3
120	49643	SS	Case, seal	3
121	13984	NBR	O-ring, seal case – 70D	3
	14333	FPM	O-ring, seal case	3
	# 48649	EPDM	O-ring, seal case	3
127	48278	STG	V-packing	6
128	49646	SS	Adapter, male	6
162	43248	PTFE	Back-up-ring, seat	6
163	43249	NBR	O-ring, seat – 80D	6
	44383	FPM	O-ring, seat – 70D	3
	# 46206	EPDM	O-ring, seat – 70D	6
164	44037	SS	Seat	6
166	44038	SS	Valve	6

167	44039	SS	Spring	6
168	44564	PVDF	Retainer, spring	6
172	17617	NBR	O-ring, valve plug – 90D	6
	11691	FPM	O-ring, valve plug – 90D	6
	# 46207	EPDM	O-ring, valve plug – 70D	6
174	49293	SS	Plug, valve	6
185	49641	SS	Head, manifold	1
	49972	SS	<i>Head, manifold flushed (1/8" flushed port)</i>	1
188	49647	S	Screw, HSH (M8x70)	8
260	30613	STZP R	Mount, rail assy	1
	76513	STZP R	Mount, rail assy	1
283	34334	-	Kit, oil drain (3/8" x 24) (see individual datasheet)	1
299	818456**	SS	Head, complete w/NBR O-rings and seals (7CP6111,7CP6111G1,7CP6171,7CP6171G1)	1
300	76933	NBR	Kit, seal (incl. 97, 106, 121, 127) standard	1
	76950	FPM	Kit, seal (incl. 97, 106, 121, 127)	1
	# 31936	EPDM*	Kit, seal (incl. 97, 106, 121, 127)	1
	76068	STHT	Kit, seal (incl. 97, 106, 121, 127)	1
310	76387	NBR	Kit, valve (incl. 162,163,164,166,167,168,172) standard	2
	76940	FPM	Kit, valve (incl. 162,163,164,166,167,168,172)	2
	# 76258	EPDM	Kit, valve (incl. 162,163,164,166,167,168,172)	2
500	8081	-	Gearbox (see individual datasheet)	1

Bold print numbers are unique to a particular pump model. *Italics are optional items.* { } Date of latest production change. # Silicone oil/grease required. R Components comply with RoHS directive. * Review individual parts in each kit for material code identification. ** Complete head for models 7CP6111, 7CP6111G1, 7CP6171, 7CP6171G1 only. View 'Tech Bulletins' 002, 003, 024, 036, 043, 053, 064, 074, 083 and 095 for additional information.

Material codes: (not part or part number)

ABS	ABS plastic	FPM	Fluorocarbon	SS	316 stainless steel
AL	Aluminum	NBR	Medium nitrile (Buna-N)	STCP	Steel / chrome plated
CC	Ceramic	NY	Nylon	STG	Special blend PTFE white
CM	Chrome-moly	PE	Polyethylene	STHT	Special PTFE High temp
EPDM	Ethylene Propylene diene mon.	PTFE	Pure Polytetrafluoroethylene	STL	Steel
F	Cast iron	PVDF	Polyvinylidene fluoride	STZP	Steel / zinc plated
FBR	Fiber	RBR	Rubber	TNM	Special high strength
FCM	Forged chrome-moly	S	304 stainless steel		